



14 Rydal Place Wheeler Heights NSW

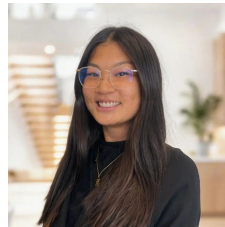
4 2 2

Offering generous living across two levels, this well appointed home, offers four bedrooms, an upper living and dining area leading to entertaining balcony that promises sweeping valley views and overlooks the private lawn and gardens. Nestled in a quiet cul-de-sac, this property features two bathrooms, ample storage and a double lock-up garage, perfect for family living.

Type : House

View : <https://www.jdhrealestate.com.au/8603881>

- _ Two spacious living areas both with polished floors
- _ Centralised timber kitchen with gas cooking and dishwasher
- _ Four excellent bedrooms, all with robes
- _ Two family bathrooms, one on each level
- _ Upper level entertaining patio overlooking district
- _ Luscious lower level lawns and garden areas



Natalie Wong
02 9451 5224



Kristy Audsley
9451 5224

[For full version visit the website](https://www.jdhrealestate.com.au)