



6 Lyndale Place Belrose NSW

4 2 4

Set at the end of a peaceful cul-de-sac within a family-friendly community, this expansive four bedroom residence blends seamless indoor/outdoor integration with fabulous poolside entertaining, promising an effortless lifestyle. Beautifully presented throughout with a sleek stone kitchen onlooking the solar heated saltwater pool, new bathrooms and powder room with feature timber vanities, the home delivers a desirable layout with spacious bedrooms plus home office or fifth bedroom, and is just steps away from local shops, restaurants, Belrose Public School, and the city bus.

Type : House
Land Size : 530 sqm
View : <https://www.jdhrealestate.com.au/8102222>

Features

_Bi-fold doors from kitchen and family offer superb outdoor flow

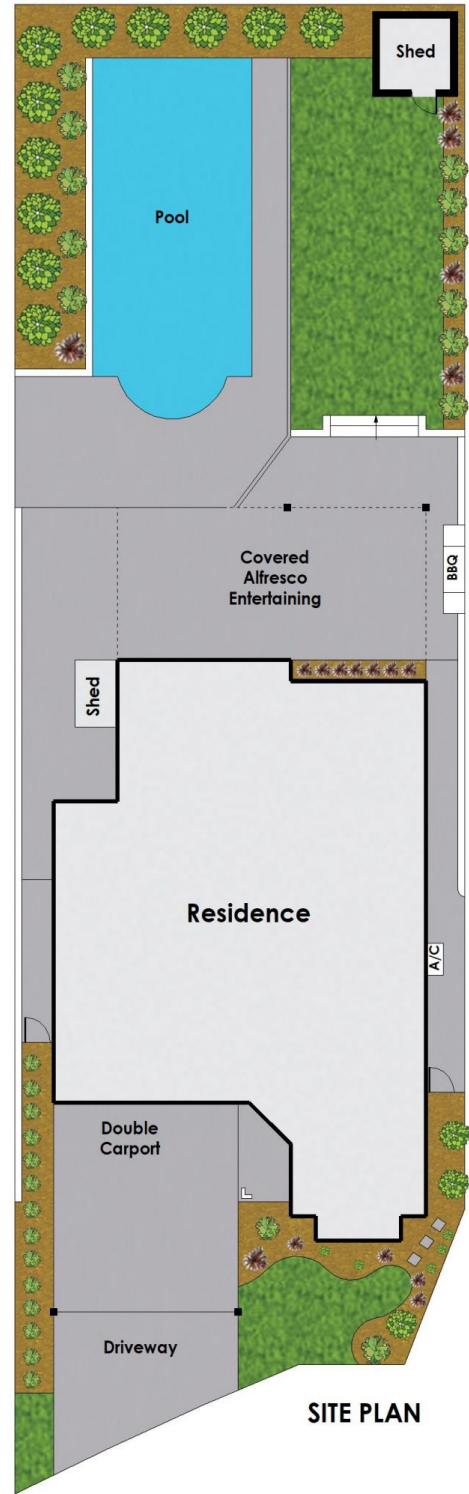
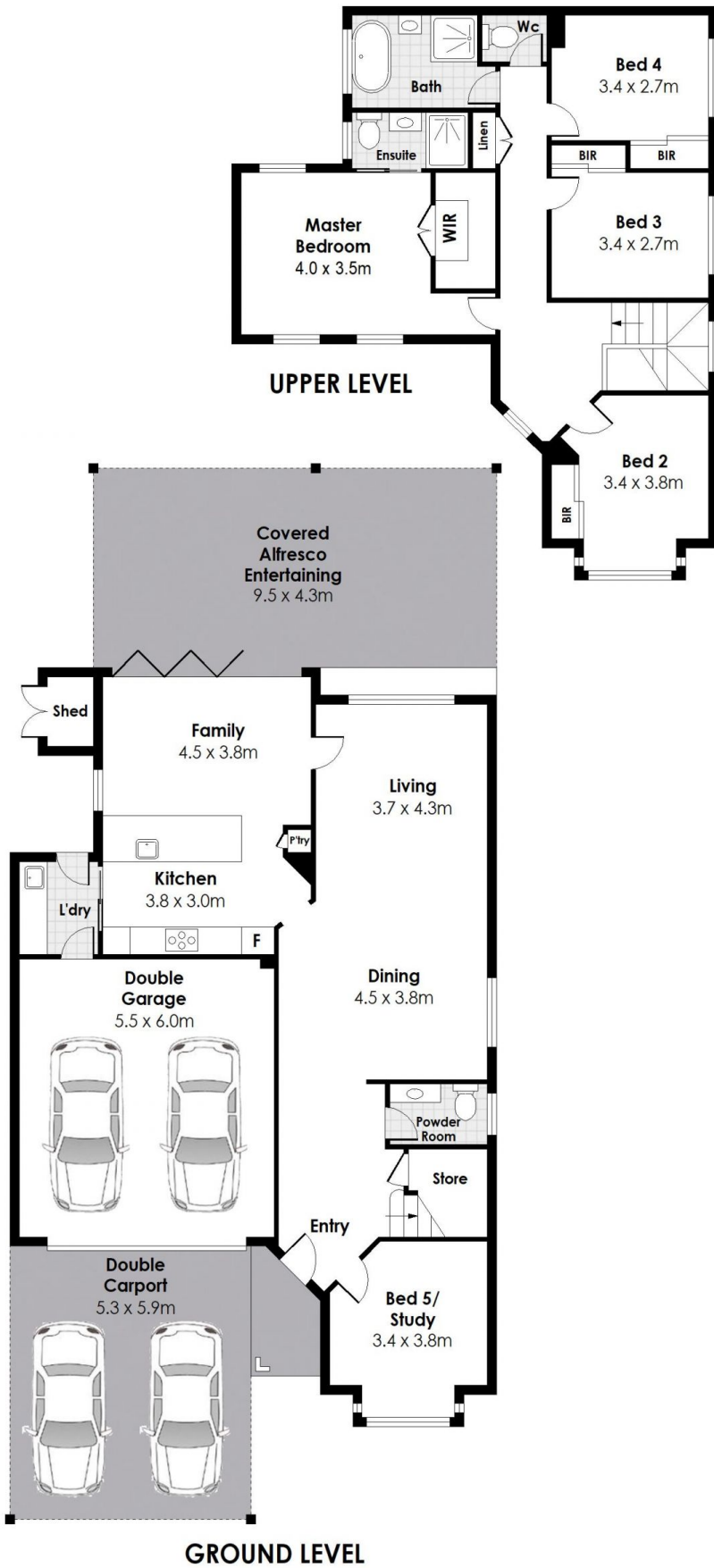


Kristy Audsley
9451 5224



Julia Leach
94515224

[For full version visit the website](https://www.jdhrealestate.com.au)



FLOOR Area:
206 sqm approx.



6 Lyndale Place, Belrose



Indicative only. Dimensions are approximate. All information contained herein is gathered from sources we believe to be reliable. We cannot guarantee its accuracy. Interested persons should make and rely on their own enquires.