



**6 Lyndale Place Belrose NSW**

4 2 4

Set at the end of a peaceful cul-de-sac within a family-friendly community, this expansive four bedroom residence blends seamless indoor/outdoor integration with fabulous poolside entertaining, promising an effortless lifestyle. Beautifully updated throughout with a sleek stone kitchen onlooking the solar heated saltwater pool, new bathrooms and powder room with feature timber vanities, the home delivers a desirable layout with spacious bedrooms plus home office/fifth bedroom, and is just steps away from local shops, restaurants, Belrose Public School, and the city bus.

**Type** : House  
**Price** : \$ 2,525,000  
**Land Size** : 530 sqm  
**View** : <https://www.jdhrealestate.com.au/7987284>

**Features**

\_Bi-fold doors from kitchen and family offer superb outdoor flow

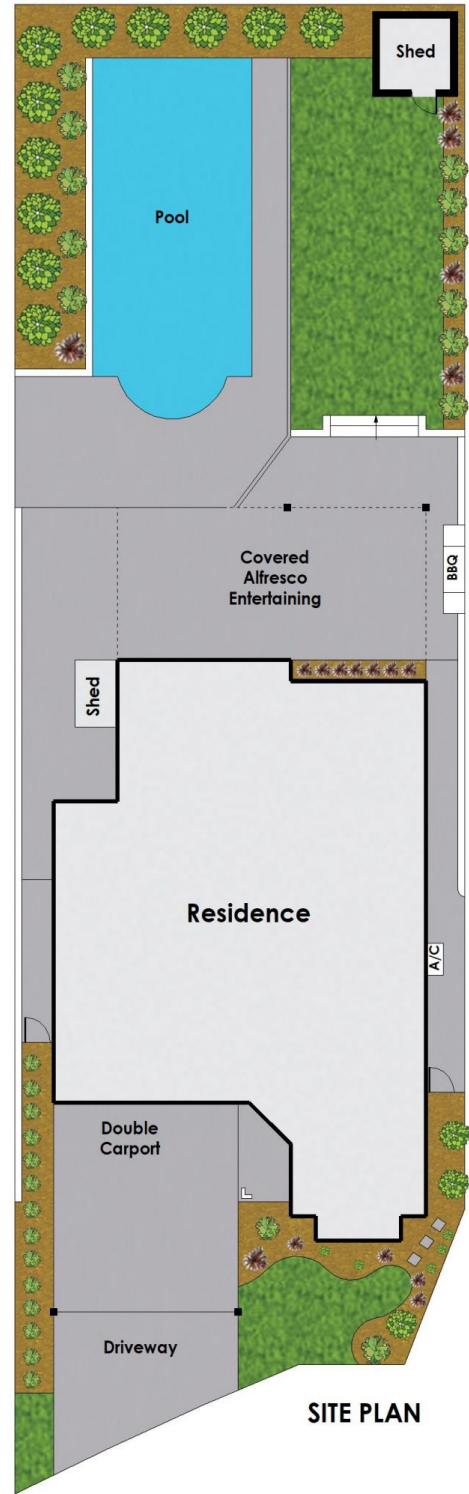
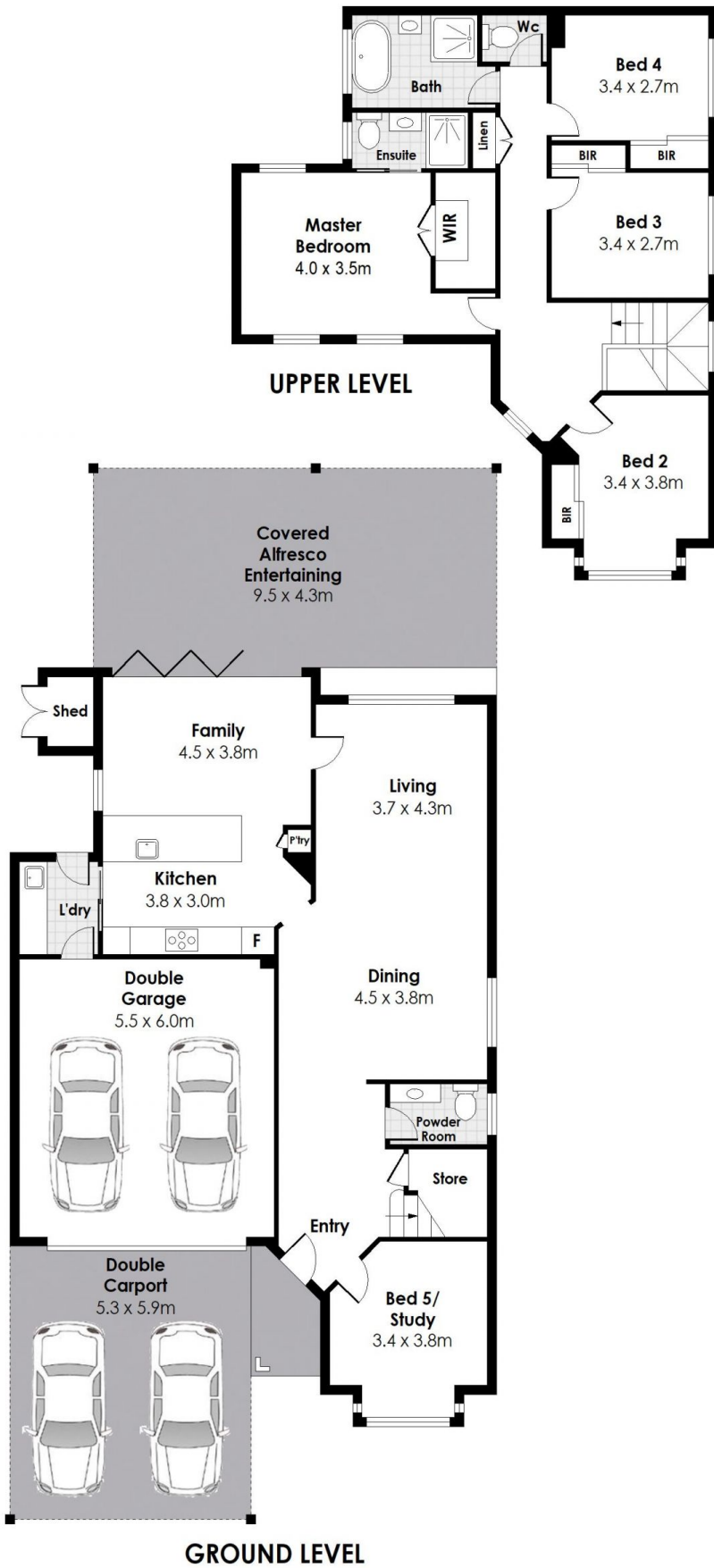


**Darren Leach**  
9451 5224



**Julia Leach**  
94515224

[For full version visit the website](https://www.jdhrealestate.com.au)



**SITE PLAN**

FLOOR Area:  
 206 sqm approx.



## 6 Lyndale Place, Belrose



Indicative only. Dimensions are approximate. All information contained herein is gathered from sources we believe to be reliable. We cannot guarantee its accuracy. Interested persons should make and rely on their own enquires.