



3 Loretta Place Belrose NSW

4  3  2 

Delivering a superb dual-level design that effortlessly combines flow and contemporary style, this exceptional home provides the perfect family environment in a highly sought-after area. Positioned in a quiet cul-de-sac, it offers intimate poolside seclusion and entertaining, while being conveniently located to all that Belrose has to offer.

Type : House
Price : \$ 2,633,000
Land Size : 700 sqm
View : <https://www.jdhrealestate.com.au/7949621>

Features

- _Light filled family area opens to poolside entertaining terrace
- _Sumptuous stone/gas kitchen with breakfast bar and pool servery
- _Additional lounge area free flowing to kitchen
- _Master retreat occupies entire top floor with ensuite and walk-in robe

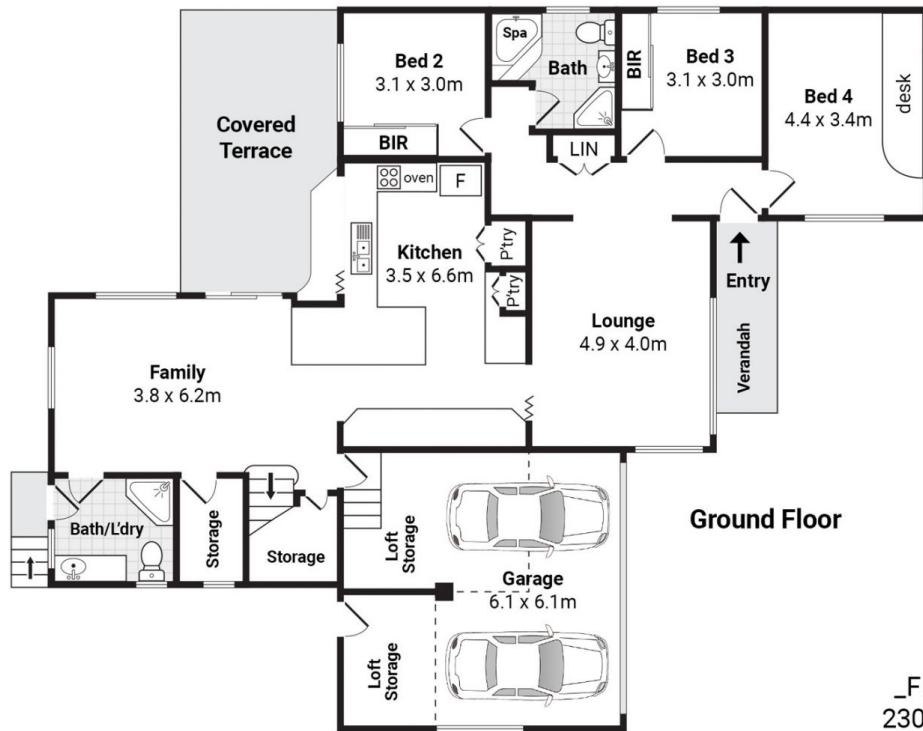
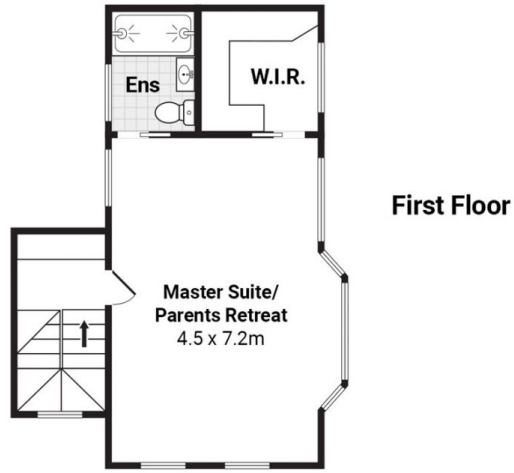


Darren Leach
9451 5224



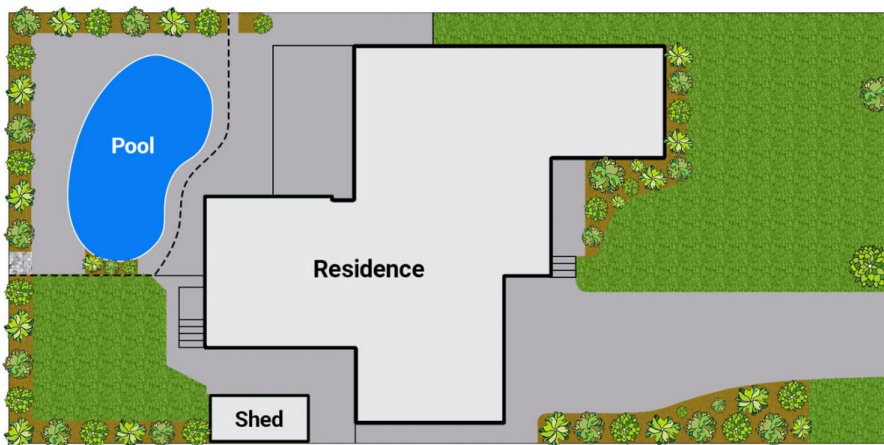
Julia Leach
94515224

[For full version visit the website](https://www.jdhrealestate.com.au)



_FLOOR Area:
230 sqm approx.

Site Plan



3 Loretta Place, Belrose



_Indicative only. Dimensions are approximate. All information contained herein is gathered from sources we believe to be reliable. We cannot guarantee its accuracy. Interested persons should make and rely on their own enquires.