



**8/2-6 Yindela Street Davidson NSW**

**3  2  2 **

Experience luxury living in this spacious townhome-style apartment, boasting a two-level layout complemented by skylights and lofty ceilings accentuating airiness and light. Nestled within a boutique building, housing cafes, restaurants and essential amenities, this residence caters perfectly to downsizers seeking sophistication or upsizing families craving effortless, contemporary living.

**Features:**

- \_Ample 145sqm approx. of space within a prestigious building comprising only 10 apartments
- \_Expansive living and dining area featuring soaring ceilings and skylights
- \_Gourmet stone kitchen with gas cooking and breakfast bar
- \_Glass doors seamlessly connect to large entertaining terrace
- \_Security building with intercom, lift access from both

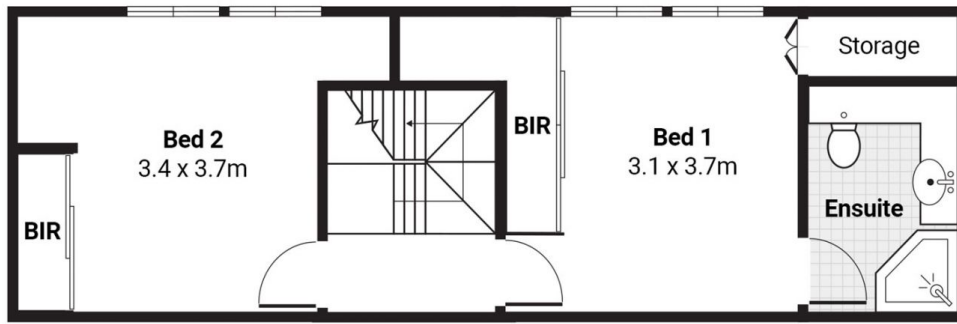
**Price** : Sold  
**Building Size** : 145 sqm  
**View** : <https://www.jdhrealestate.com.au/sale/nsw/northern-beaches/davidson/residential/apartment/7919170>



**Darren Leach**  
9451 5224

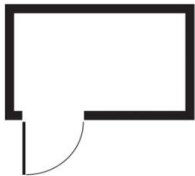


**Julia Leach**  
94515224

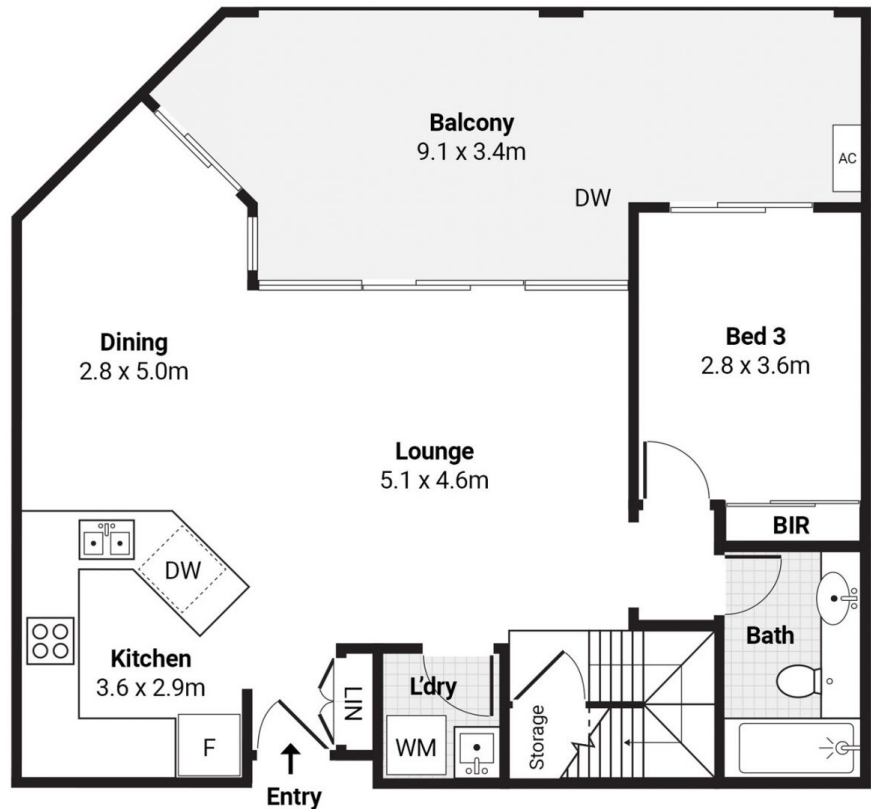
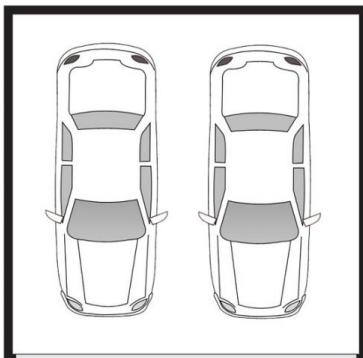


Upper Level

**Basement Storage**  
2.7 x 1.6m



**Double Lock-Up Garage**  
5.5 x 5.4m



Entrance Level

\_FLOOR Area:  
145 sqm approx.



**8/2-6 Yindela Street, Davidson**

**jd**  
**h**

\_Indicative only. Dimensions are approximate. All information contained herein is gathered from sources we believe to be reliable. We cannot guarantee its accuracy. Interested persons should make and rely on their own enquires.