



## 6/2-6 Yindela Street Davidson NSW

3 2 2

From its expansive two-level design to the skylights and high ceilings enhancing light and space, this exceptional three bedroom apartment delivers a lifestyle of luxury and convenience. Set within a boutique building above handy shops offering cafe's, restaurants, beauty and medical facilities, it is the perfect property for downsizers or a family upsizing desiring easy, modern living.

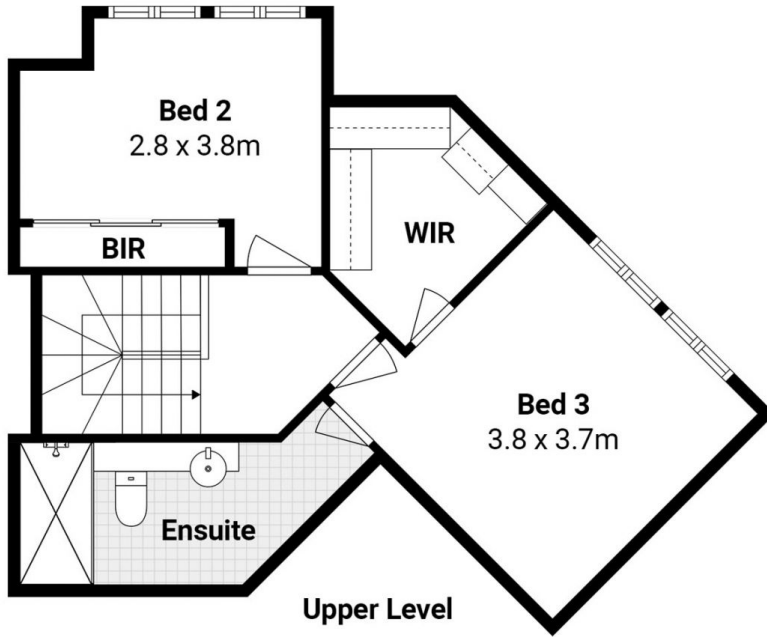
- \_Sizable 161sqm approx. in a quality building of only 10 apartments
- \_Sweeping living and dining with high ceilings and skylights
- \_Gourmet kitchen with 40mm stone benchtops, generous pantry, induction cooking and industrial Smeg oven
- \_Glass doors open to sunlit terrace with leafy outlook and bbq bayonet

**Type** : Apartment  
**Price** : \$ 1,710,000  
**Building Size** : 161 sqm  
**View** : <https://www.jdhrealestate.com.au/7640082>

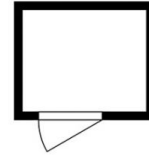


**Darren Leach**  
9451 5224

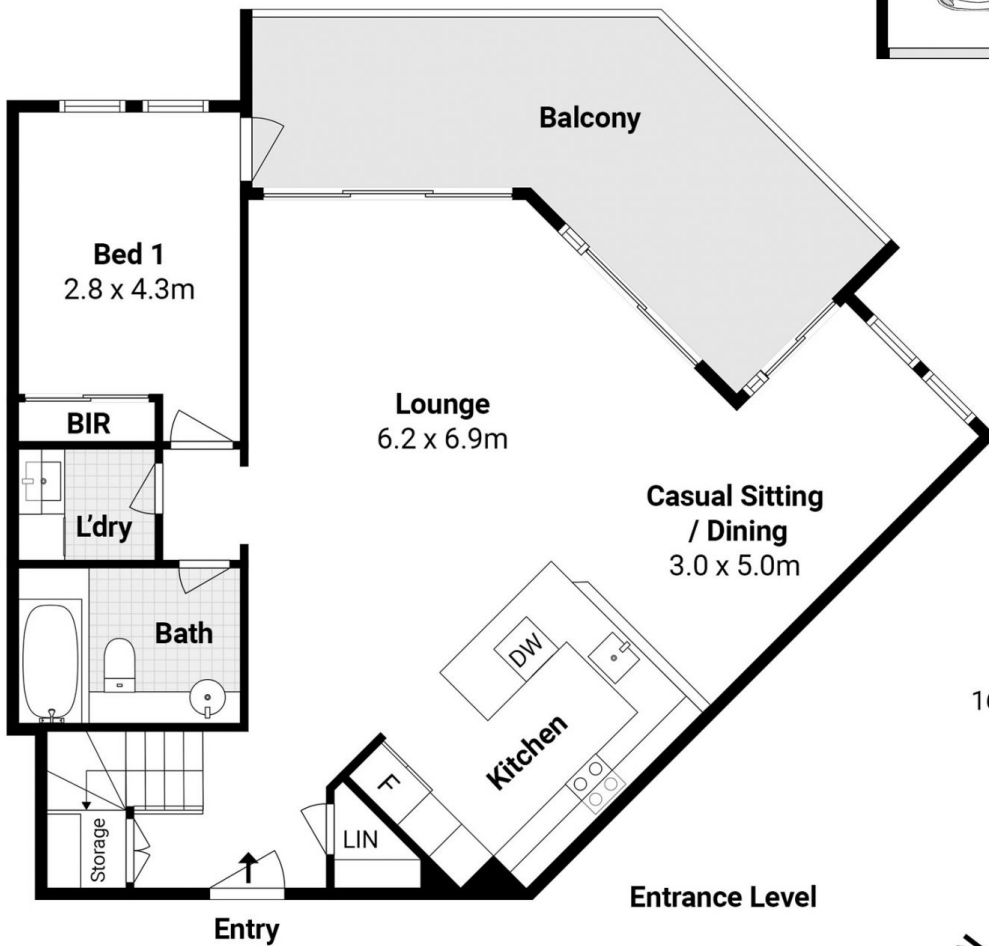
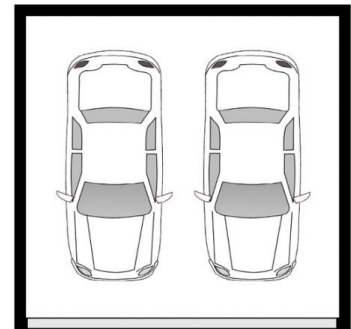
[For full version visit the website](https://www.jdhrealestate.com.au)



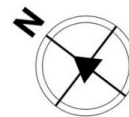
**Basement Storage**  
1.8 x 1.5m



**Double Lock-Up Garage**  
5.4 x 5.6m



\_FLOOR Area:  
161.5 sqm approx.



## 6/2-6 Yindela St, Davidson



\_Indicative only. Dimensions are approximate. All information contained herein is gathered from sources we believe to be reliable. We cannot guarantee its accuracy. Interested persons should make and rely on their own enquires.