



105 Ashworth Avenue Belrose NSW

3 2 2

Tucked away in a peaceful cul-de-sac within easy walking distance to all that Belrose has to offer, this exceptional residence presents a striking facade that conceals a touch of grandeur within, including an inspiring open plan living space with fireplace, vaulted ceilings, and bi-fold doors that seamlessly lead to the sparkling pool surrounded by national park. Revel in a serene and spacious home, enhanced by a breathtaking bush backdrop, offering a peaceful lifestyle filled with family comforts and relaxation.

Features:

- _Two storey home with level entertaining in stunning bush setting
- _Open and airy living area with vaulted ceilings and gas fireplace

Type : House
Price : \$ 2,640,000
Land Size : 700 sqm
View : <https://www.jdhrealestate.com.au/7590767>



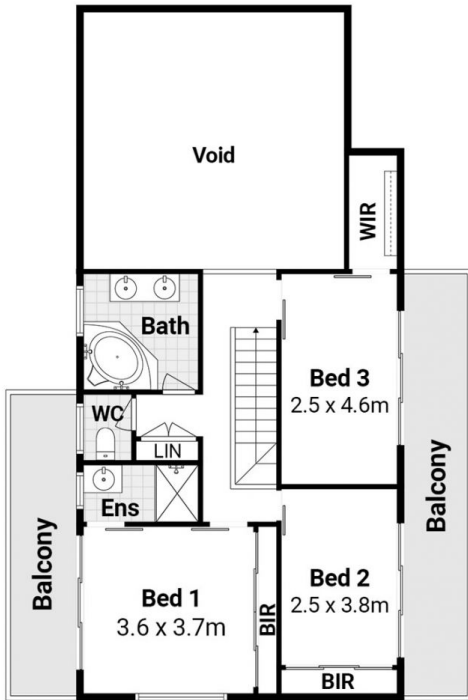
Darren Leach
9451 5224



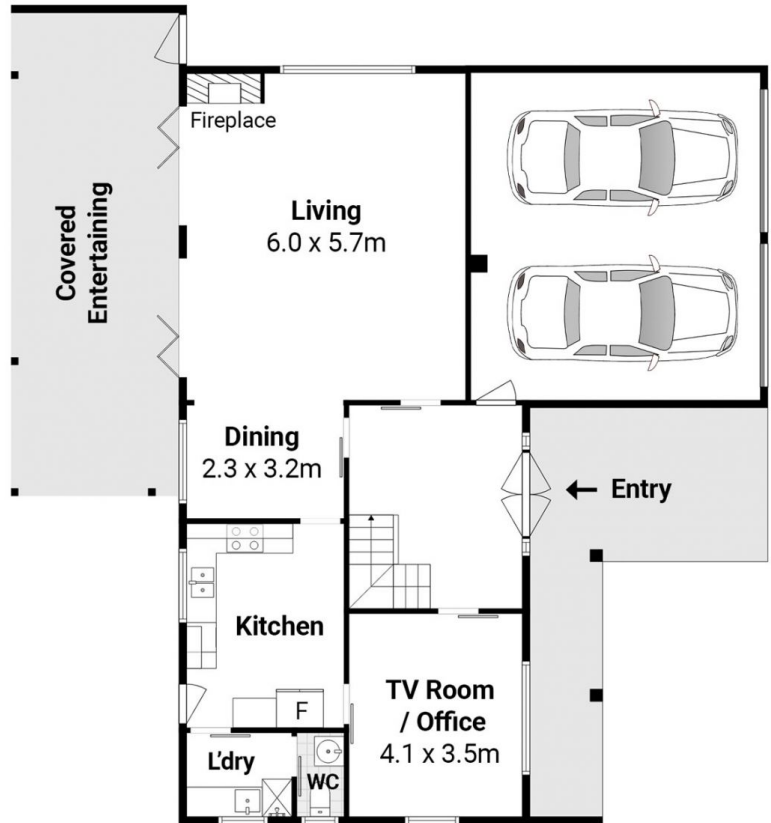
Julia Leach
94515224

[For full version visit the website](https://www.jdhrealestate.com.au)

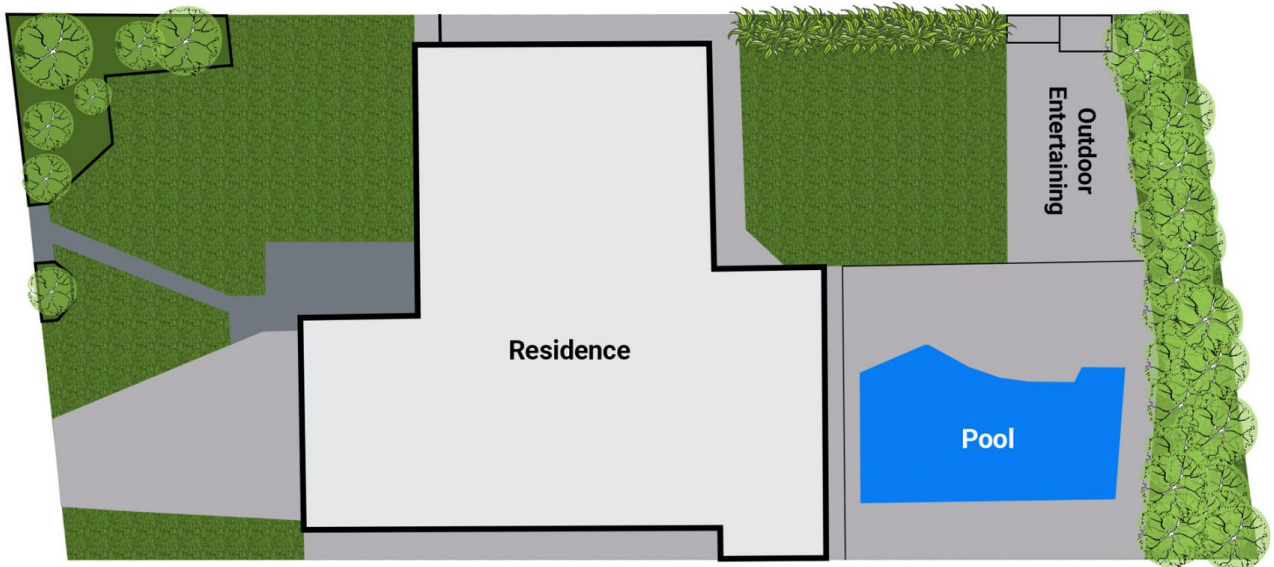
_FLOOR Area:
239sqm approx.



First Floor



Ground Floor



Site Plan



105 Ashworth Ave, Belrose



_Indicative only. Dimensions are approximate. All information contained herein is gathered from sources we believe to be reliable. We cannot guarantee its accuracy. Interested persons should make and rely on their own enquires.