



**6 Rupari Place Belrose NSW**

4  2  3 

Placed on the high side of a peaceful cul-de-sac basking in national park views and northerly sun, this spacious brick home offers an exciting opportunity to add your own flair to an already generous layout comprising of four/five bedrooms, rumpus/home office, two bathrooms and a double lock up garage. Offered for the first time to the market, the north facing home revels in a traditional two storey floorplan with kitchen overlooking rear patio and lawns, air conditioning on both levels.

**Features:**

- \_Generous two storey floorplan, positioned on a 696 sqm north facing block
- \_Light filled living area with air conditioned comfort
- \_Separate dining adjoins kitchen and opens to patio

**Type** : House  
**Land Size** : 696 sqm  
**View** : <https://www.jdhrealestate.com.au/7270483>

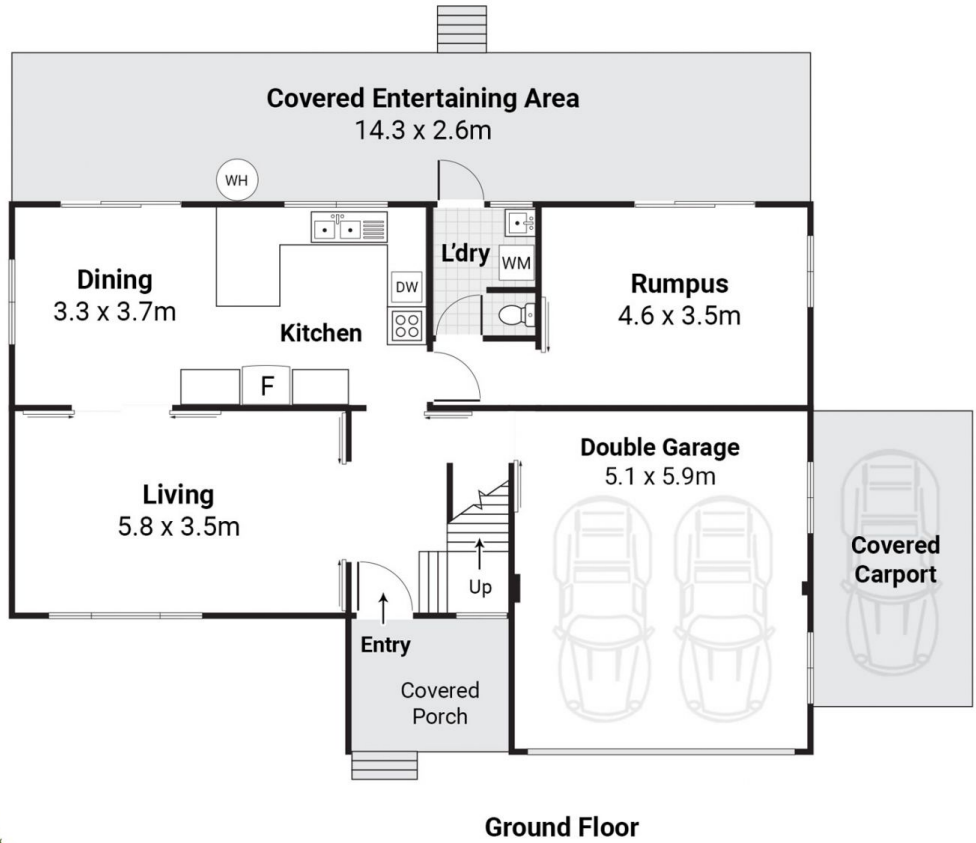
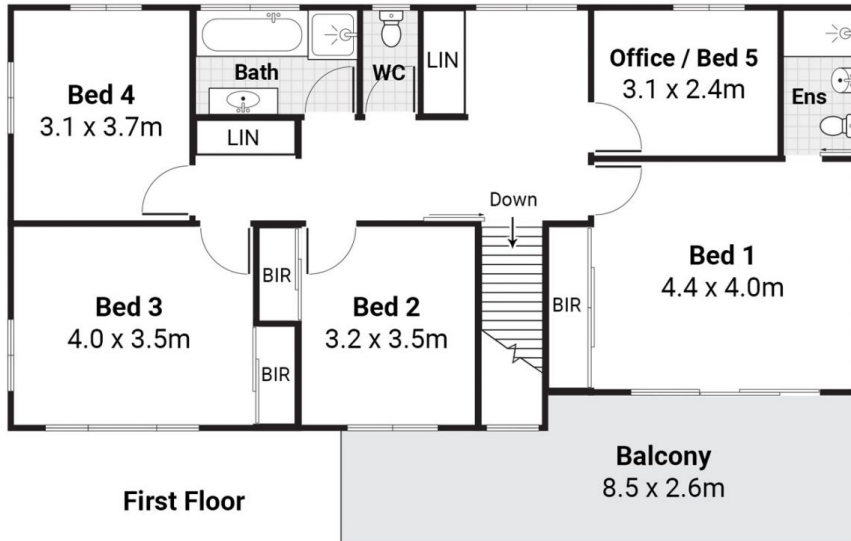


**Darren Leach**  
9451 5224



**Sharon Andrew**  
9451 5224

[For full version visit the website](https://www.jdhrealestate.com.au)



## 6 Rupari Pl, Belrose



Scale in metres. Indicative only. Dimensions are approximate. All information contained herein is gathered from sources we believe to be reliable. We cannot guarantee its accuracy. Interested persons should make and rely on their own enquires.