



24 Boree Road Forestville NSW

4  2  2 

Offered to the market for the first time is this much loved high-set home placed at the end of a peaceful family cul-de-sac adjoining the National Park. Resting on a 696sqm block with north facing rear and tranquil front outlook spanning to Chatswood, the home promises an exciting layout with spacious living/bedrooms, awaiting a buyer to make their own and bask in the bush setting.

Features:

- _ Bushside cul-de-sac setting with track to Davidson Park
- _ Placed on 696 sqm block offers enormous potential
- _ Spacious living and dining area flows to kitchen overlooking rear
- _ Four bedrooms, one with ensuite
- _ Vast upper rumpus or 2nd living area

Type : House
Land Size : 700 sqm
View : <https://www.jdhrealestate.com.au/7221553>

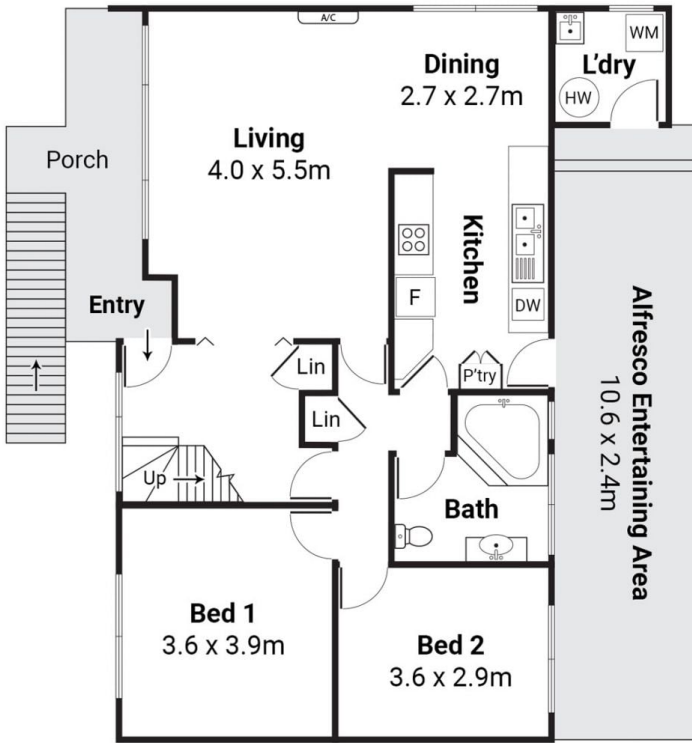


Darren Leach
9451 5224

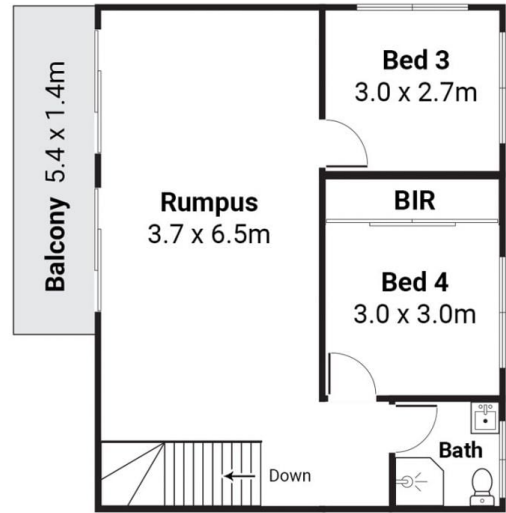


Sharon Andrew
9451 5224

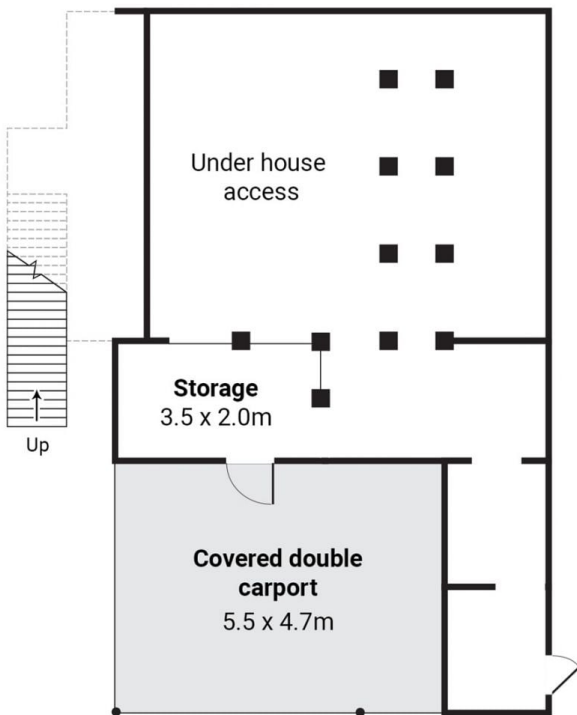
[For full version visit the website](https://www.jdhrealestate.com.au)



First Floor



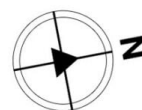
Second Floor



Ground Level



Site Plan



24 Boree Rd, Forestville



Scale in metres. Indicative only. Dimensions are approximate. All information contained herein is gathered from sources we believe to be reliable. We cannot guarantee its accuracy. Interested persons should make and rely on their own enquires.