

**5 Tuscan Place Beacon Hill NSW**

3 2 1

\*Access off Dresden Ave\*

Privately tucked away from the road in a private cul-de-sac style setting, this double brick home delivers the perfect entry level home or investment with fresh spaces and loads of scope to capitalise on the incredible panoramic views. Offering a versatile floorplan with potential for separate in-law or teen accommodation, it incorporates three bedrooms and two bathrooms over two levels, split system air conditioning plus an oversized lock up garage.

**Features:**

- \_Potential for dual living with lower level having separate access
- \_Pristine kitchen with servery, electric cooking and

**Type** : House  
**Land Size** : 556 sqm  
**View** : <https://www.jdhrealestate.com.au/7174007>

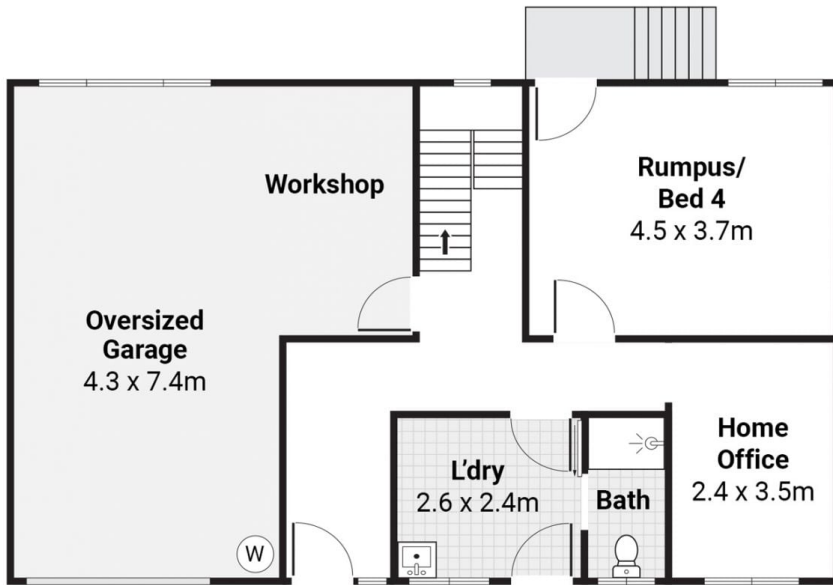


**Darren Leach**  
9451 5224

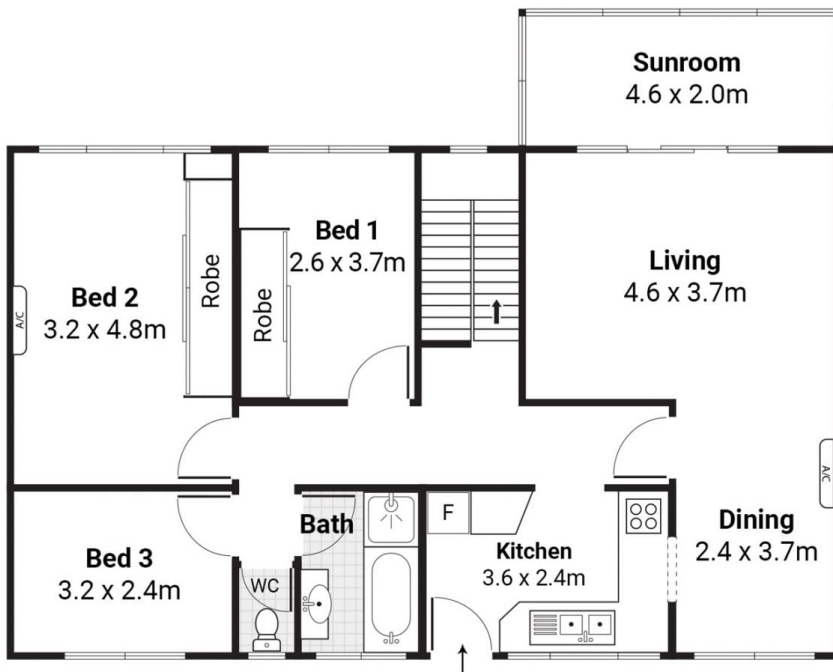


**Sharon Andrew**  
9451 5224

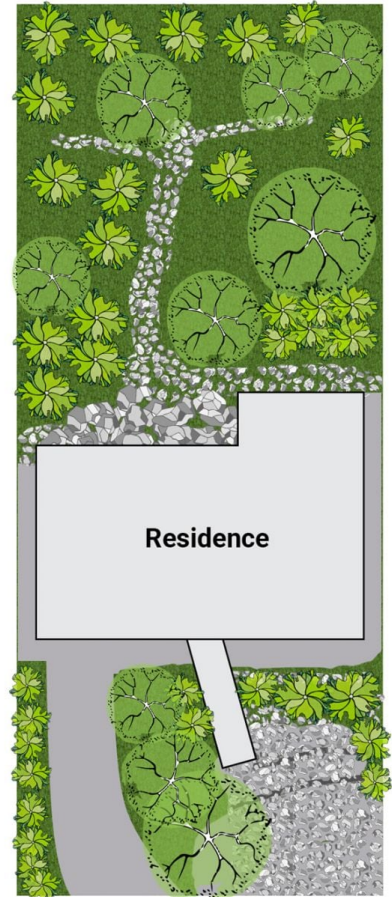
[For full version visit the website](https://www.jdhrealestate.com.au)



Lower Level



Upper Level



Site Plan



## 5 Tuscan Pl, Beacon Hill



Scale in metres. Indicative only. Dimensions are approximate. All information contained herein is gathered from sources we believe to be reliable. We cannot guarantee its accuracy. Interested persons should make and rely on their own enquires.