



**25 Fitzpatrick Avenue East Frenchs Forest NSW**

4 1 1

Set on a level approx. 700sqm north facing parcel, this superb allotment only moments to all that Frenchs Forest has to offer, promises endless opportunities to build your dream home. Currently an original four bedroom cottage behind adorable picket fences, it could be made liveable whilst you plan or even refreshed into an investment property.

**Features:**

- \_ North facing approx. 700sqm of level land
- \_ Opportunity to build your own dream home
- \_ Timber four bedroom cottage with possibilities
- \_ Living and gas kitchen open to rear yard
- \_ Original bathroom with separate bathtub
- \_ Large garage plus off-street parking

**Type** : House  
**Price** : \$ 1,800,000  
**Land Size** : 702 sqm  
**View** : <https://www.jdhrealestate.com.au/7047433>

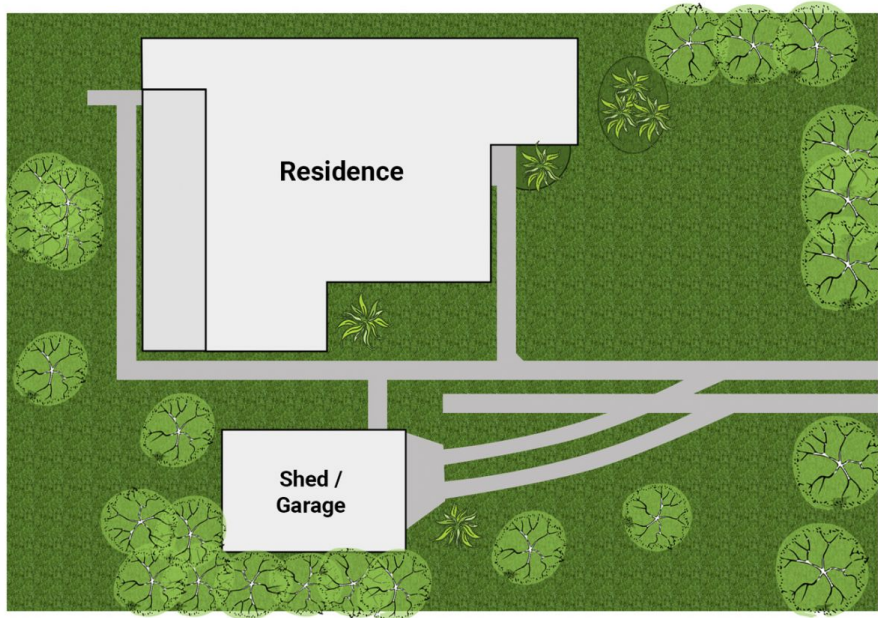
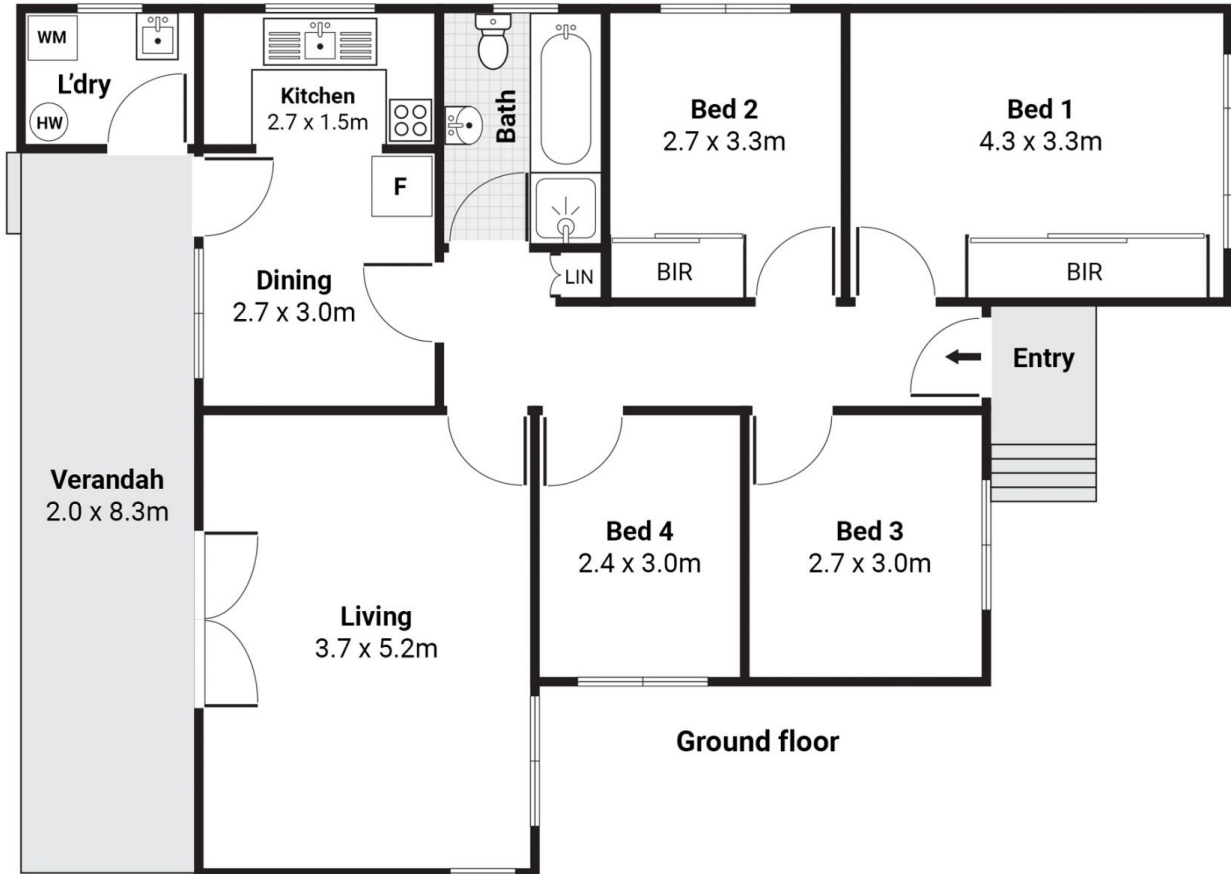


**Darren Leach**  
9451 5224

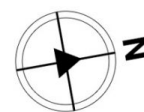


**Julia Leach**  
94515224

[For full version visit the website](https://www.jdhrealestate.com.au)



Site plan



## 25 Fitzpatrick Ave East, Frenchs Forest

**jd**  
**h**

Scale in metres. Indicative only. Dimensions are approximate. All information contained herein is gathered from sources we believe to be reliable. We cannot guarantee its accuracy. Interested persons should make and rely on their own enquires.