






## 11 Palermo Place Allambie Heights NSW

2  1  1 

Quietly resting on a picturesque tree lined cul-de-sac, this immaculately presented cottage on approx. 556sqm has been recently refreshed for immediate enjoyment and awaits a family looking to create their dream home. Delivering a free-flowing layout leading to rear lawn and gardens, this adorable home is ready to inspire and is only moments from all that Allambie has to offer.

**Price** : Sold \$2,000,000  
**Land Size** : 556 sqm  
**View** : <https://www.jdhrealestate.com.au/sale/nsw/northern-beaches/allambie-heights/residential/house/6927480>

### Features

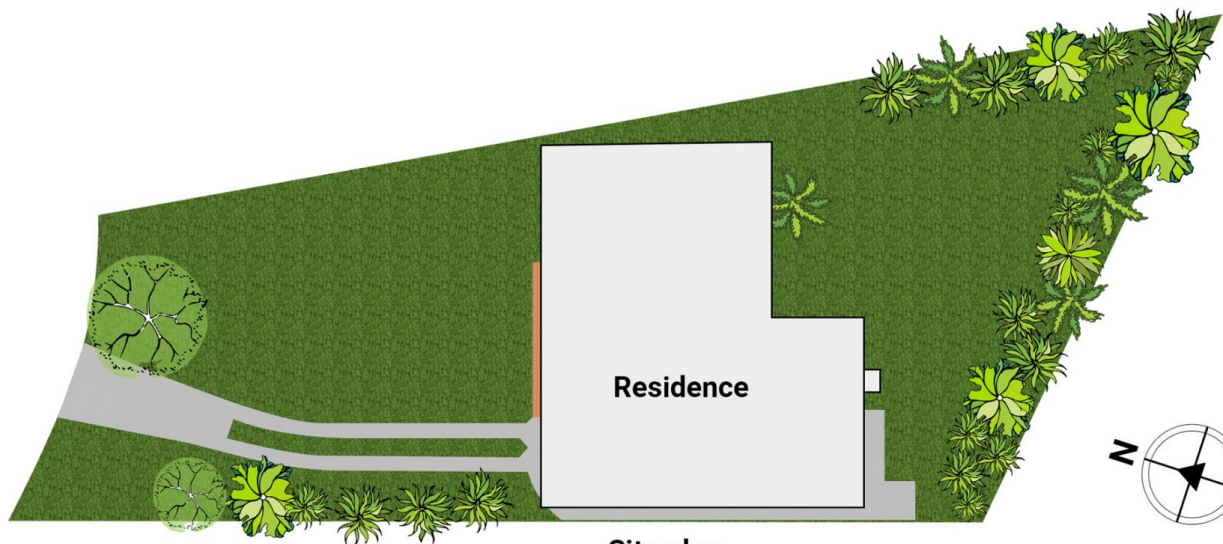
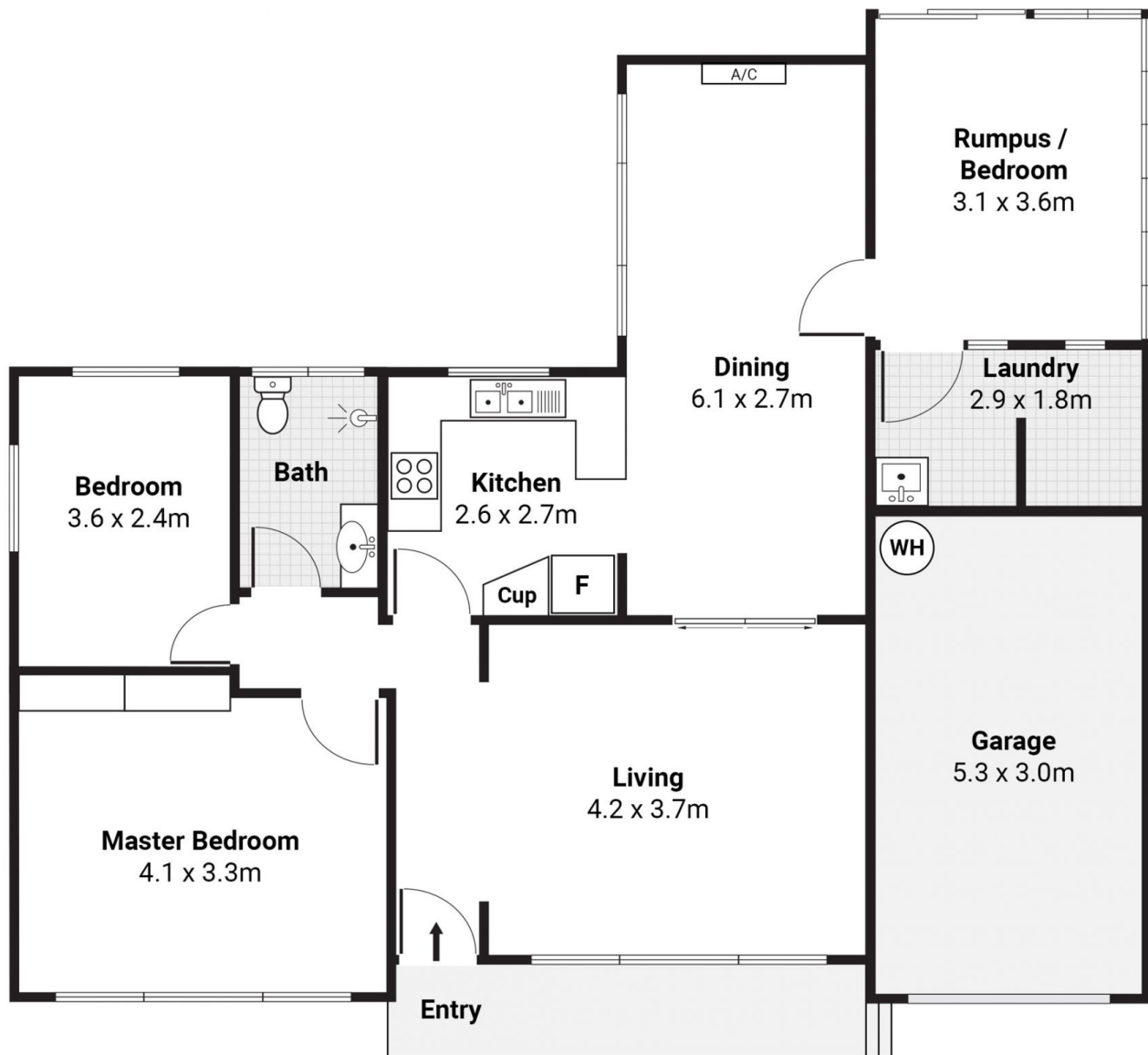
- \_ Beautifully maintained on approx. 556sqm parcel
- \_ Formal lounge flows to separate dining room
- \_ Immaculate kitchen overlooks rear lawn area
- \_ Two good sized bedrooms, master with wall length built-ins
- \_ Rear family rumpus or potential 3rd bedroom flows to garden
- \_ Laundry with additional tiled area, potential for 2nd



**Darren Leach**  
9451 5224



**Julia Leach**  
94515224



## 11 Palermo Pl, Allambie Heights

**jdh**

Scale in metres. Indicative only. Dimensions are approximate. All information contained herein is gathered from sources we believe to be reliable. We cannot guarantee its accuracy. Interested persons should make and rely on their own enquires.