



## 16 Jennifer Avenue Allambie Heights NSW

5 🛏 3 🚿 2 🚗

Offering superb livability and bedroom accommodation sprawled over two levels, this sumptuous oasis is a celebration of family living. Capturing 180 degree views to the horizon from the brand new spotted gum deck and master retreat, the home offers fabulous indoor/outdoor areas surrounded by lush level lawns, entertaining decks and includes a private fire pit area.

### Features:

- \_Whisper quiet location with Manly Dam tracks at the end of the street
- \_Vast living space leads to separate dining with doors to front patio
- \_Spacious and sleek gas kitchen with breakfast bar overlooking deck

**Type** : House  
**Price** : \$ 3,000,000  
**Land Size** : 809 sqm  
**View** : <https://www.jdhrealestate.com.au/6447375>

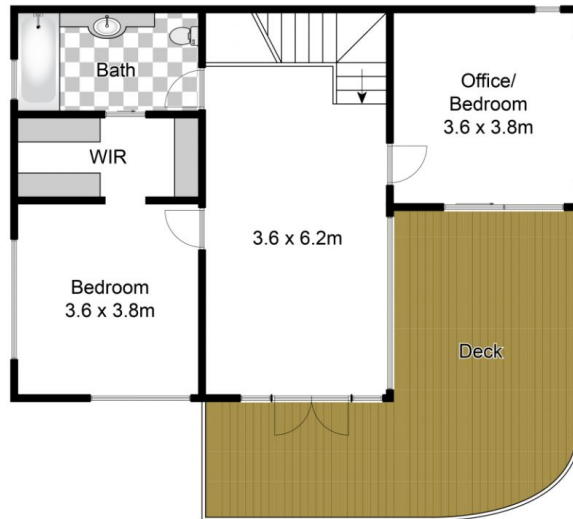


**Darren Leach**  
9451 5224

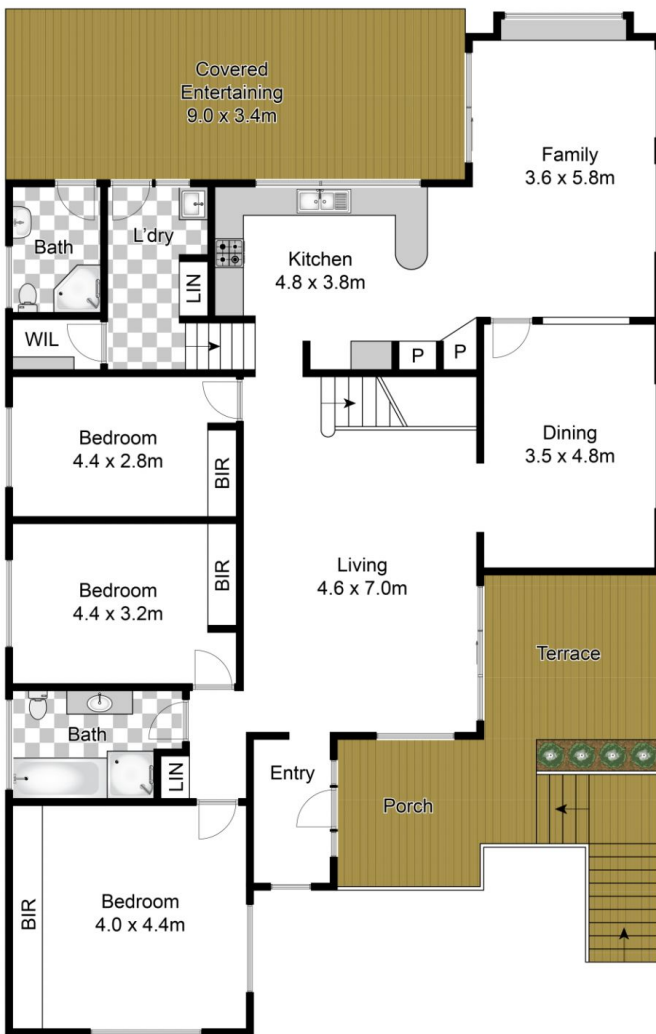


**Julia Leach**  
94515224

[For full version visit the website](https://www.jdhrealestate.com.au)



First Floor



Ground Floor



Site Plan

Whilst [bwrm.com.au](http://bwrm.com.au) has made every attempt to ensure the accuracy of the floor plan contained here, measurements are approximate and no responsibility is taken for any error, omission, or mis-statement. This plan is for illustrative purposes only.

16 Jennifer Avenue, Allambie Heights

