



## 6 Horst Place Mona Vale NSW

6 3 2

Situated in a peaceful cul-de-sac among other quality homes, this sumptuous retreat is the perfect family entertainer. A traditional two storey layout with an effortless indoor/outdoor flow, the home comes complete with a chef's gas kitchen, six bedrooms with built-in wardrobes, three bathrooms and an inground pool nestled in private landscaped surrounds.

### Features

- \_Vast open plan living and dining space flowing to entertaining deck
- \_Gourmet gas kitchen with industrial Ilve cooking, stone island and study desk
- \_Oversized master suite with walk-in robe, built-ins, opulent ensuite with freestanding bath

**Type** : House  
**Price** : \$ 3,050,000  
**Land Size** : 693 sqm  
**View** : <https://www.jdhrealestate.com.au/6350979>



**Darren Leach**  
9451 5224

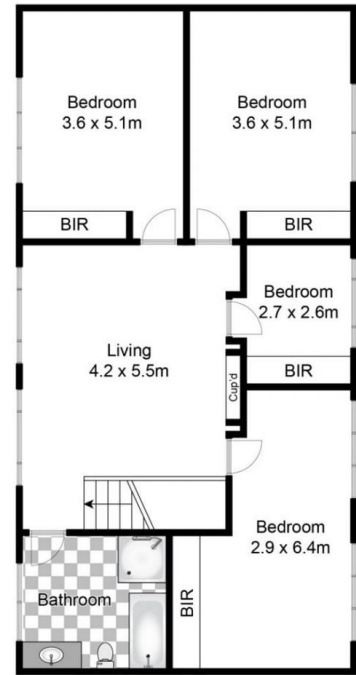


**Julia Leach**  
94515224

[For full version visit the website](https://www.jdhrealestate.com.au)



Ground Floor



First Floor



Site Plan

Whilst [bwrn.com.au](http://bwrn.com.au) has made every attempt to ensure the accuracy of the floor plan contained here, measurements are approximate and no responsibility is taken for any error, omission, or mis-statement. This plan is for illustrative purposes only.

