



12 Lyndale Place Belrose NSW

4  2  2 

Peacefully nestled in a picturesque cul-de-sac and family friendly community, this spacious four bedroom home combines fabulous entertaining with a low maintenance lifestyle. Complimented by a flexible floorplan with NBN ready home office perfect for those that work from home with the added convenience of being footsteps to local shops, restaurants, Belrose public school and the city bus.

Features:

- _Granite gas kitchen overlooking the child friendly yard
- _Generous and beautifully presented living, dining and family areas
- _Separate home office on lower level with full length storage
- _Master suite with his and hers robes and ensuite

Type : House
Price : \$ 1,855,000
Land Size : 545 sqm
View : <https://www.jdhrealestate.com.au/6049494>

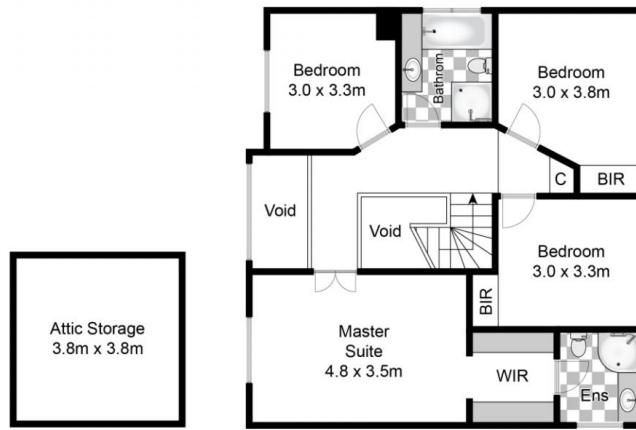


Darren Leach
9451 5224



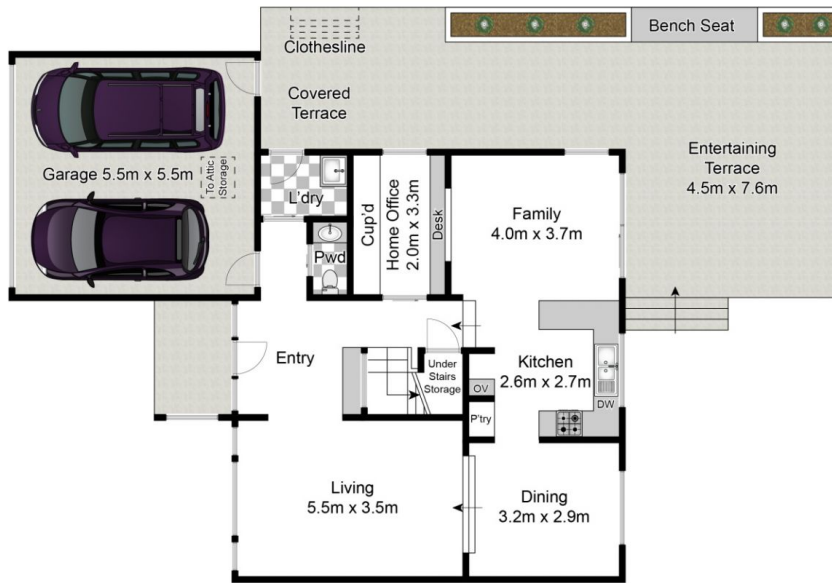
Julia Leach
94515224

[For full version visit the website](https://www.jdhrealestate.com.au)



(Not In Position)

Upper Level



Entry Level



Site Plan

Whilst bwr.com.au has made every attempt to ensure the accuracy of the floor plan contained here, measurements are approximate and no responsibility is taken for any error, omission, or mis-statement. This plan is for illustrative purposes only.

