



135/8 Koorala Street Manly Vale NSW

2 2 1

Defined by its generous proportions and ultra handy location, this spacious two bedroom and two bathroom apartment is peacefully located on the top floor of the popular "Peninsula" resort style apartments.

Type : Apartment

View : <https://www.jdhrealestate.com.au/5923787>

Features:

- _Spacious air conditioned living flows to wrap around balcony
- _Versatile dining/office area - perfect for those who work from home
- _Modern kitchen with gas appliances and dishwasher
- _Master bedroom with large built-ins and spa ensuite
- _Good sized second bedroom with built-in
- _Internal laundry (dryer included)
- _Single carspace plus visitor parking

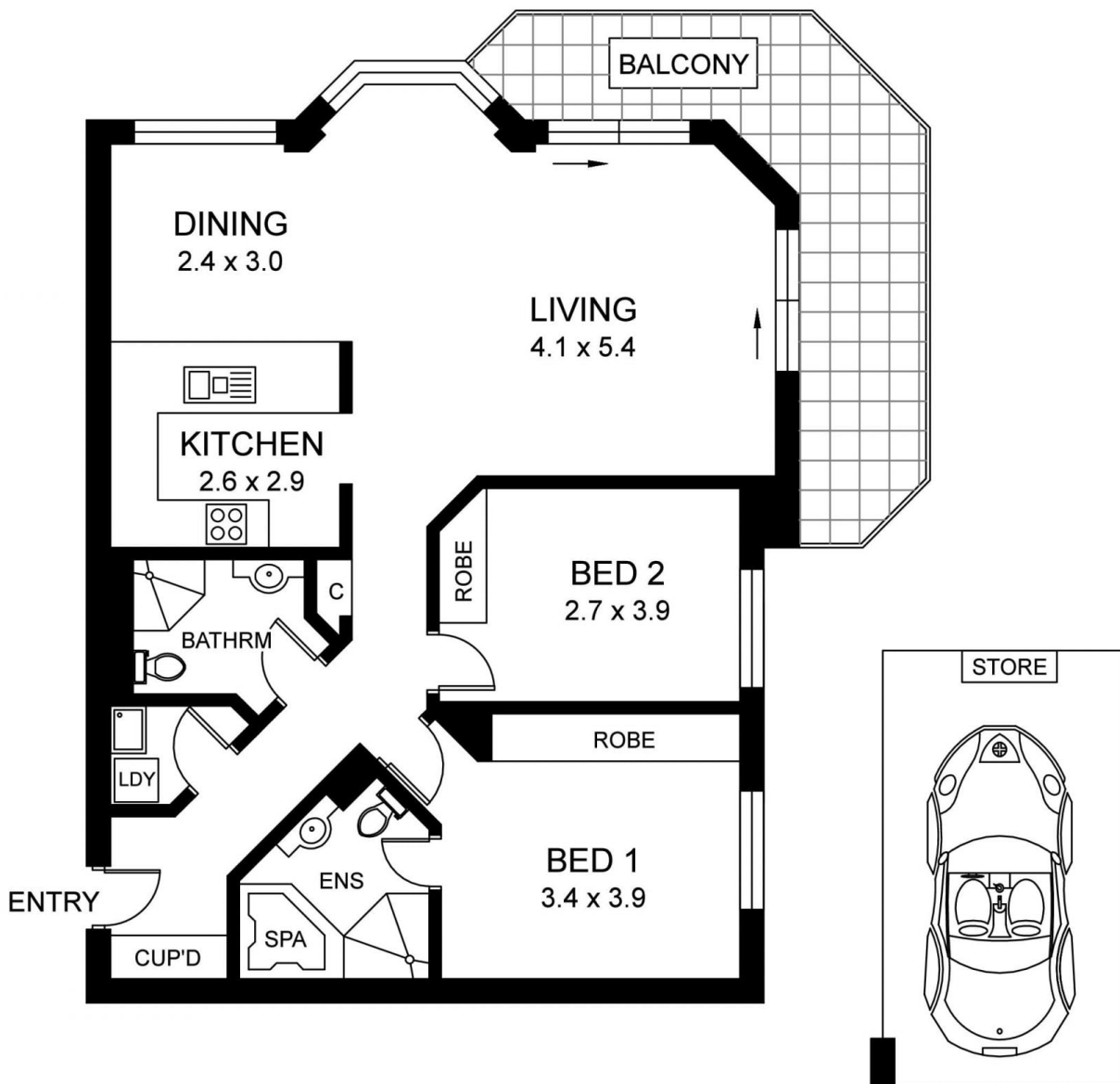


Julia Leach
94515224



Kristy Audsley
9451 5224

[For full version visit the website](https://www.jdhrealestate.com.au)



SECURE UNDERCOVER CARSPACE

PLANS ARE ONLY INDICATIVE OF LAYOUT AND SHOULD NOT BE TAKEN AS AN EXACT REPRESENTATION OF THE PROPERTY. DIMENSIONS, ASPECT AND ANY FLOOR AREAS GIVEN ARE APPROXIMATES ONLY.



Manly Vale 135/8 Koorala Street Internal Area approx. 90 sqm 0 3 M

Disclaimer : The information contained herein has been gathered from the vendor of the property and professional service providers and we cannot verify its accuracy either way. Prospective purchasers must rely upon their own enquiries and should first verify the accuracy of the information before proceeding with a purchase.