



## 12 Ben Love Place Beacon Hill NSW

5 🚗 3 🚗 2 🚗

Nestled in a peaceful, family-friendly cul-de-sac in a premier pocket, this impressive dual level residence showcases the best of low maintenance and modern family living. Defined by generous proportions and private outdoor entertaining, it is only moments to quality schools, buses, beaches and Westfield shopping.

### Features:

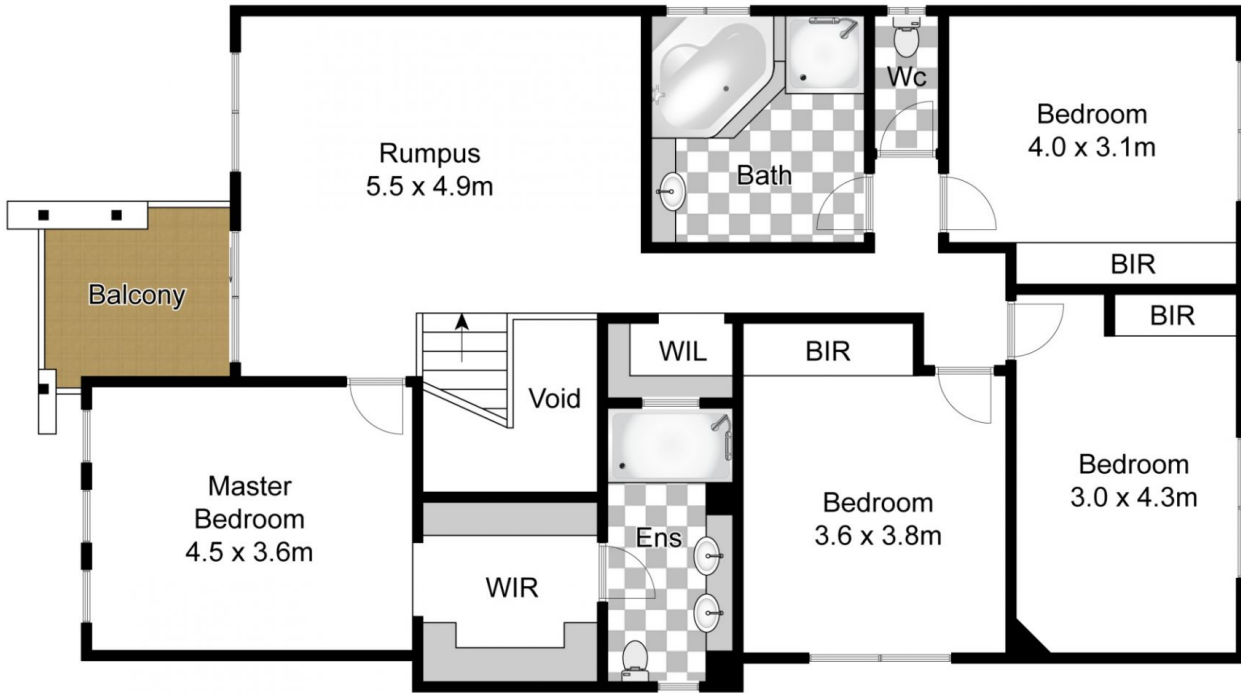
- \_ Sought after cul-de-sac among other quality homes
- \_ Contemporary family home only ten years young
- \_ Sprawling open plan living flows to alfresco entertaining
- \_ Modern gas kitchen with island and walk in pantry
- \_ Master suite with walk-in robe and ensuite bathroom
- \_ Versatile lower level bedroom/retreat or home office
- \_ Private rear entertaining and low maintenance gardens
- \_ Automatic DLUG with internal access, storage, gas points

**Type** : House  
**Price** : \$ 1,846,000  
**Land Size** : 409 sqm  
**View** : <https://www.jdhrealestate.com.au/5923777>

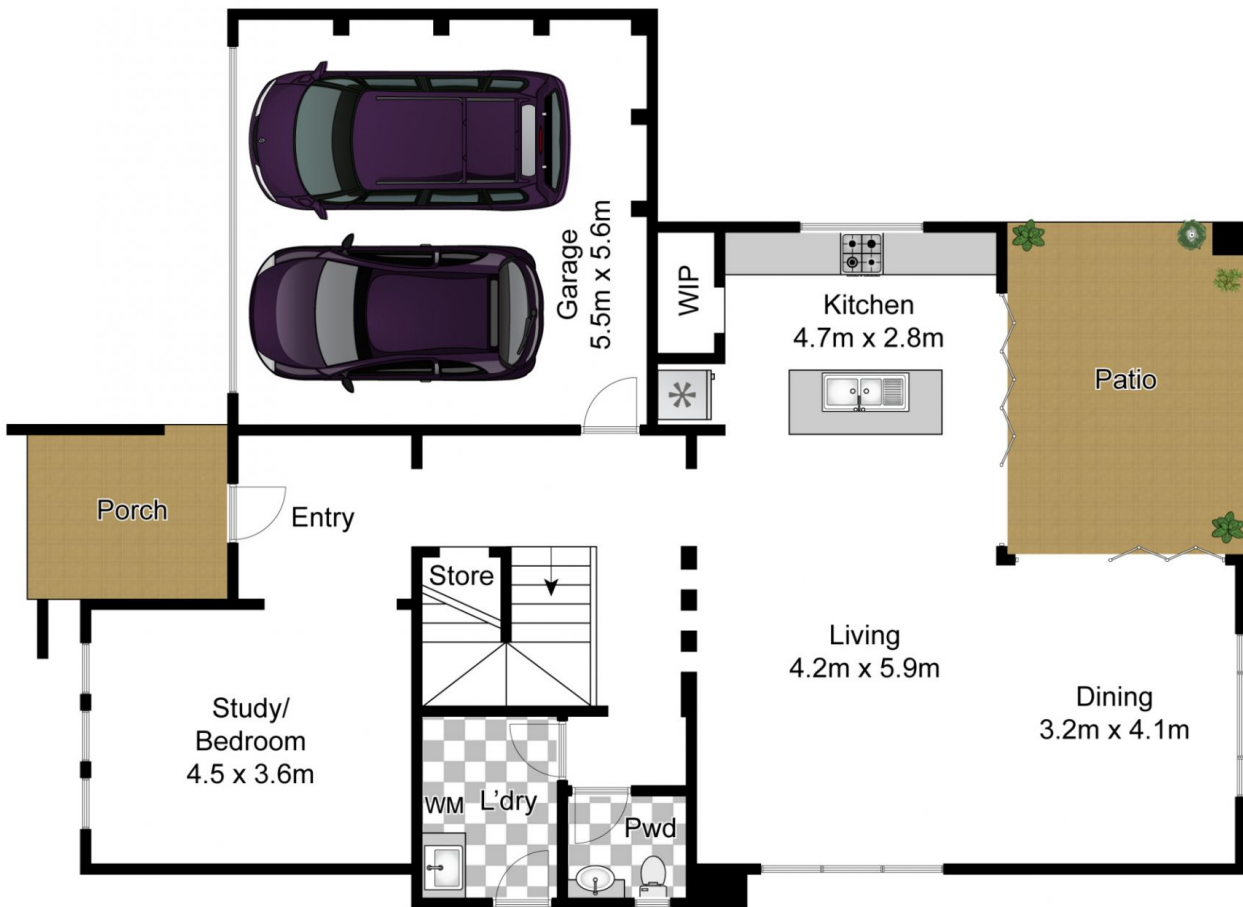


**Darren Leach**  
**9451 5224**

[For full version visit the website](https://www.jdhrealestate.com.au)



First Floor



Ground Floor

Approx House Area 280m<sup>2</sup>

Whilst [bwrn.com.au](http://bwrn.com.au) has made every attempt to ensure the accuracy of the floor plan contained here, measurements are approximate and no responsibility is taken for any error, omission, or mis-statement. This plan is for illustrative purposes only.



## 12 Ben Love Place, Beacon Hill

