






### 59 Calool Crescent Belrose NSW

5  2  2 

Set on approx 978m2 of level land in a whisper quiet bush setting, this fabulous single level family home delivers enviable indoor/outdoor flow and entertaining with private bush outlook. Ticking all the family boxes including a gas kitchen overlooking extensive alfresco dining, four excellent bedrooms plus 5th bed/study, two bathrooms and a pool, this home is ready to impress.

#### Features:

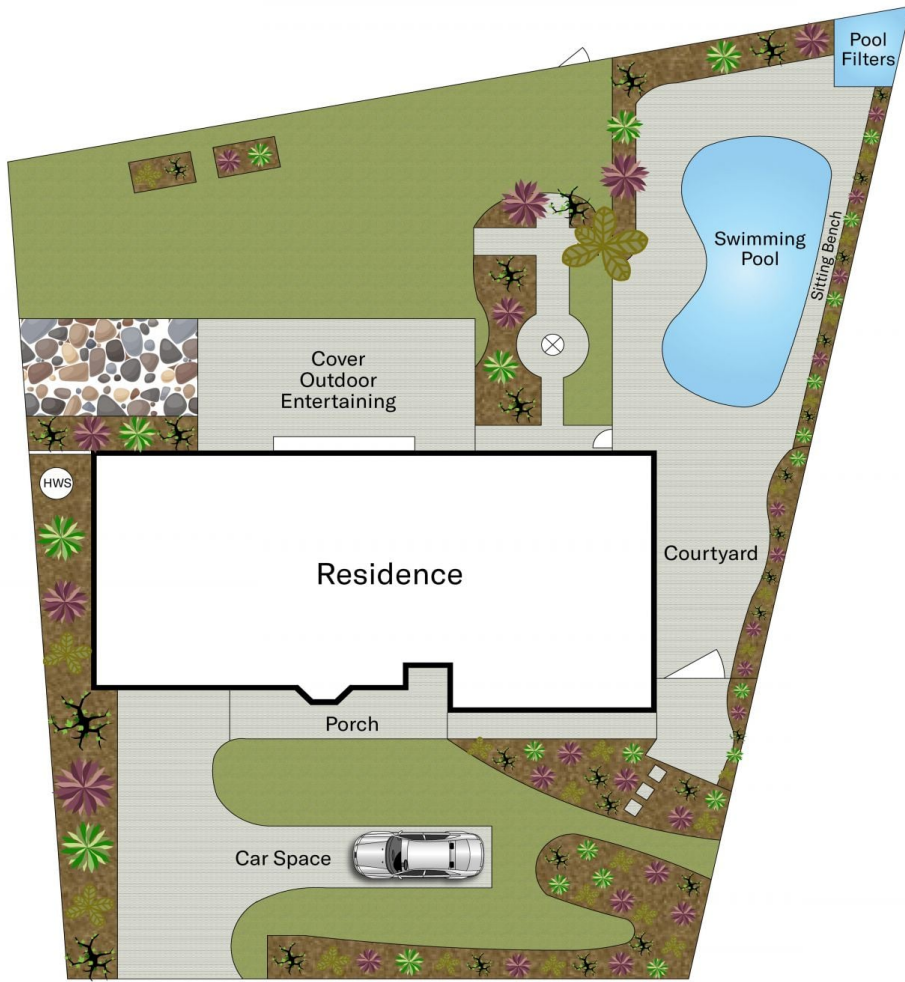
- \_Bushland setting with gate access to the reserve and Garigal National Park
- \_Gourmet gas kitchen with servery to enhance outdoor entertaining
- \_Lounge with bay window, spacious dining area plus family room off kitchen

**Type** : House  
**Land Size** : 978 sqm  
**View** : <https://www.jdhrealestate.com.au/5923761>

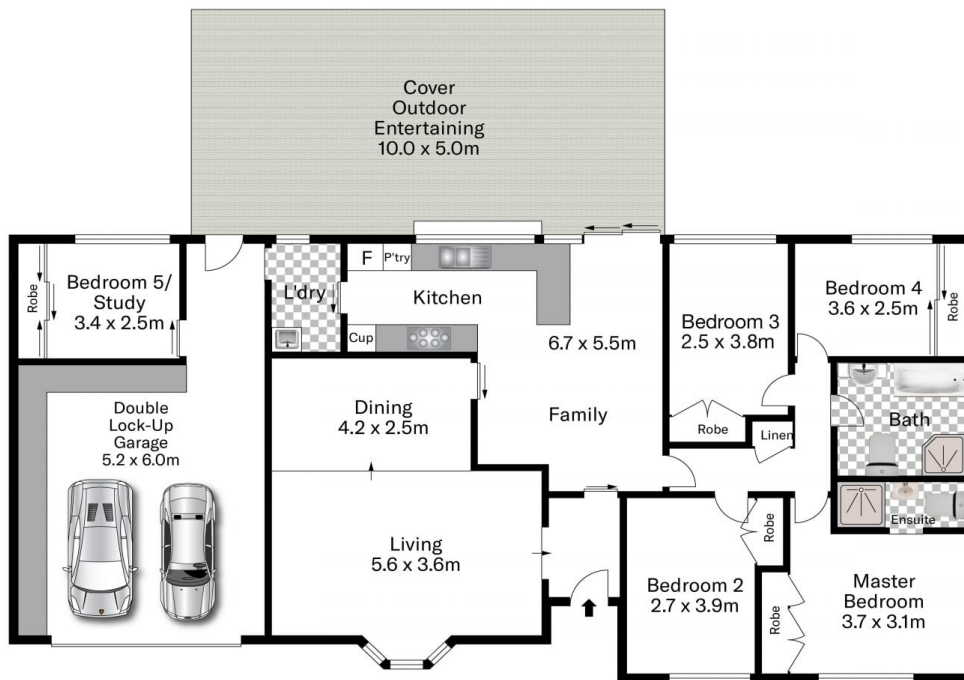


**Darren Leach**  
**9451 5224**

[For full version visit the website](https://www.jdhrealestate.com.au)



Site Plan



Ground Level

Approx House Area 179m<sup>2</sup>  
 Approx Land Area 924m<sup>2</sup>

Whilst every attempt has been made to ensure the accuracy of this floor plan, measurements are approximate and no responsibility is taken for any error, omission, or mis-statement. This plan is for illustrative purposes only.



59 Calool Cresnet, Belrose

