



9 Woolrych Crescent Davidson NSW

3  1  1 

Tastefully updated and modernised, this enchanting single level brick home is among Davidsons' favourite schools with city and Chatswood buses at the end of the street. Brimming with extras from air conditioning, a renovated bathroom and an oversized storage shed, it is designed to embrace the approx. 700sqm block with the new kitchen overlooking the luscious rear lawn and private garden.

Type : House
Price : \$ 1,485,000
Land Size : 696 sqm
View : <https://www.jdhrealestate.com.au/5923760>

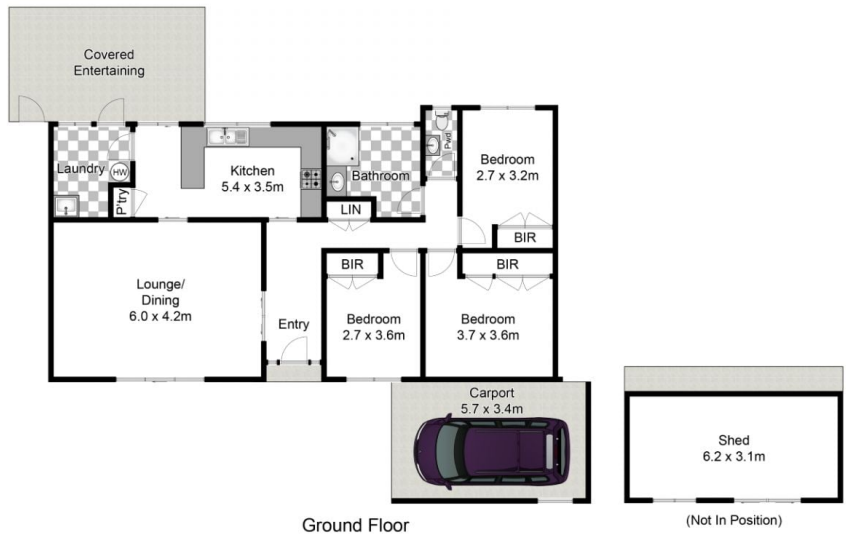
Features

- _ Immaculate home on approx. 700sqm block
- _ Desirable Davidson pocket, level walk to schools, shops and bus
- _ Newly renovated kitchen with stainless steel appliances
- _ Spacious living with modern timber flooring
- _ Three excellent bedrooms all with built-ins



Darren Leach
9451 5224

[For full version visit the website](https://www.jdhrealestate.com.au)



Approx House Area 112m²
 Approx Land Area 705m²
 Whilst bwrn.com.au has made every attempt to ensure the accuracy of the floor plan contained here, measurements are approximate and no responsibility is taken for any error, omission, or mis-statement. This plan is for illustrative purposes only.



9 Woolrych Crescent, Davidson

