



12/516 Mowbray Road Lane Cove NSW

2  **1**  **1** 

Nestled at the rear of the block, this top floor corner apartment has been modernised with fresh updates and combines light-filled living with tranquillity. It will appeal to the buyer or investor wanting a fresh apartment with a private position in a desirable, convenient location.

Type : Apartment

Price : \$ 765,000

View : <https://www.jdhrealestate.com.au/5923752>

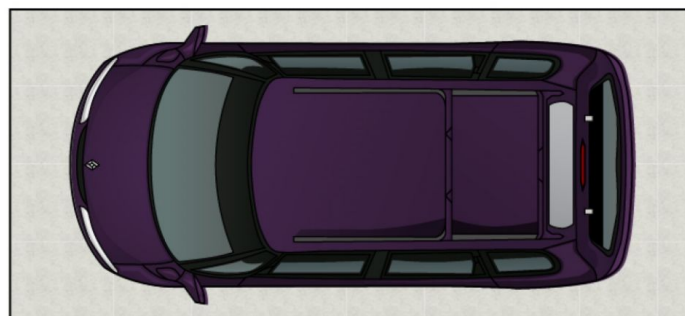
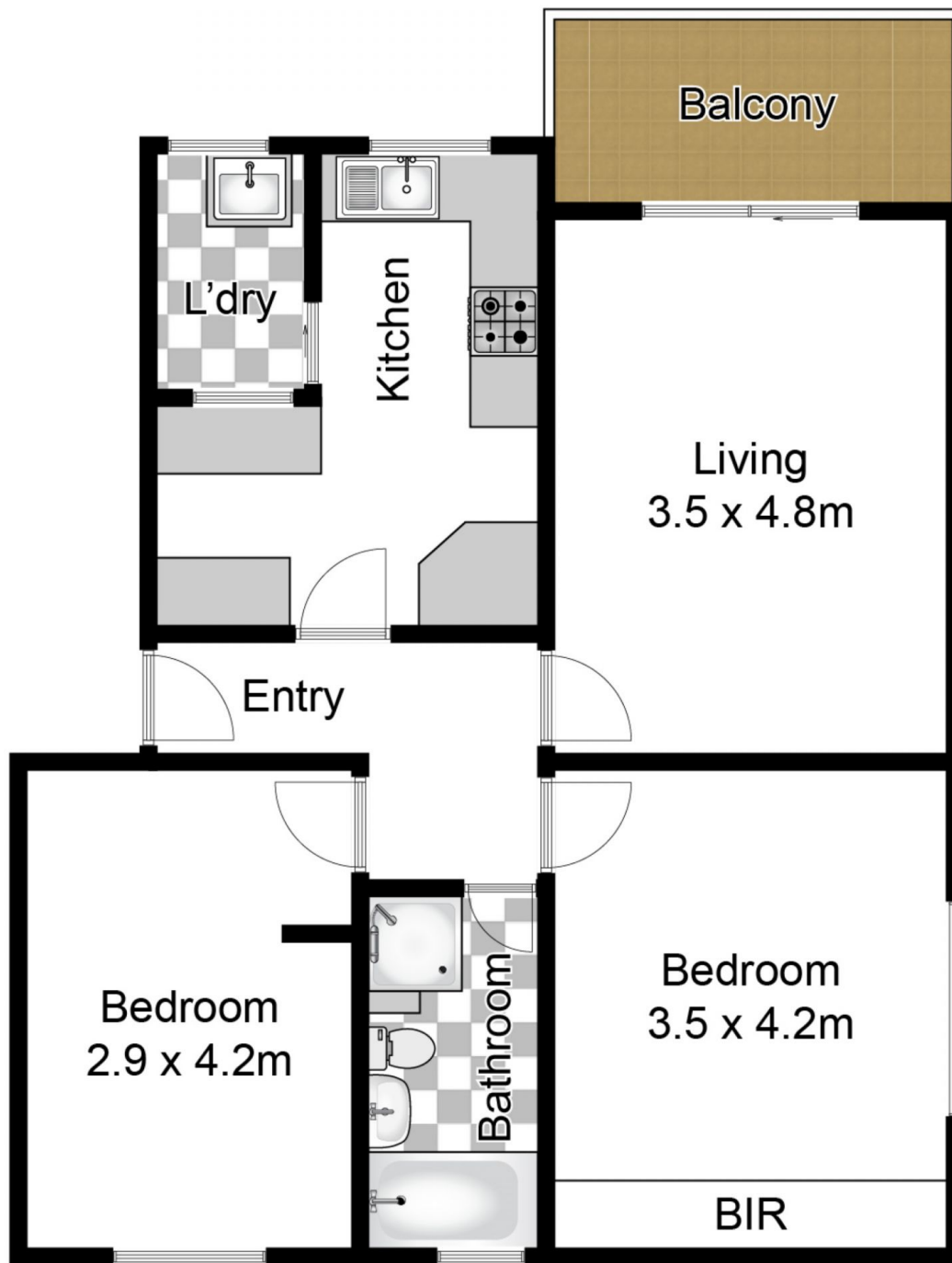
Features:

- _Spacious, well presented eat in kitchen with gas cooking and dishwasher
- _Light filled living & dining with easy flow to balcony
- _Two spacious bedrooms both with built-in robes
- _Bright updated bathroom with separate bathtub
- _Large internal laundry with ample storage space
- _Single carport with easy access, reverse cycle A/C
- _Currently leased by excellent tenants until March



Darren Leach
9451 5224

[For full version visit the website](https://www.jdhrealestate.com.au)



Undercover Car Space
(Not In Position)

Approx House Area 71m²

Whilst bwrn.com.au has made every attempt to ensure the accuracy of the floor plan contained here, measurements are approximate and no responsibility is taken for any error, omission, or mis-statement. This plan is for illustrative purposes only.



12/516 Mowbray Road, Lane Cove

