



**9 Goroka Place Beacon Hill NSW**

4 🏠 2 🚗 2 🚗

Opposite parklands and revealing 180 degree views to the ocean, this immaculate home is a rare find in a tightly held enclave. Its tranquil cul-de-sac setting offers the idyllic family environment with a children's playground, school buses and parklands at the end of the street, just an easy drive to the Northern Beaches Hospital, Warringah Mall and the beaches.

**Type** : House  
**Land Size** : 689 sqm  
**View** : <https://www.jdhrealestate.com.au/5923741>

\$975 per week

- \* Opposite Goroka parkland in a tightly held cul-de-sac
- \* Flowing lounge, dining and family areas with ocean views
- \* Pristine open plan gas kitchen with dishwasher and walk-in pantry
- \* Master retreat with built-in, walk-in and ensuite bathroom
- \* Three other double bedrooms with generous built-ins

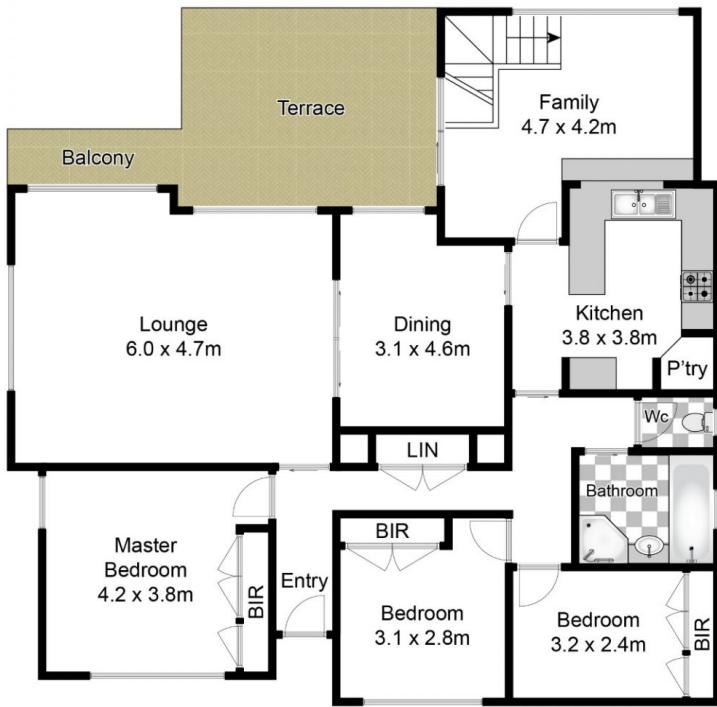


**Julia Leach**  
**94515224**

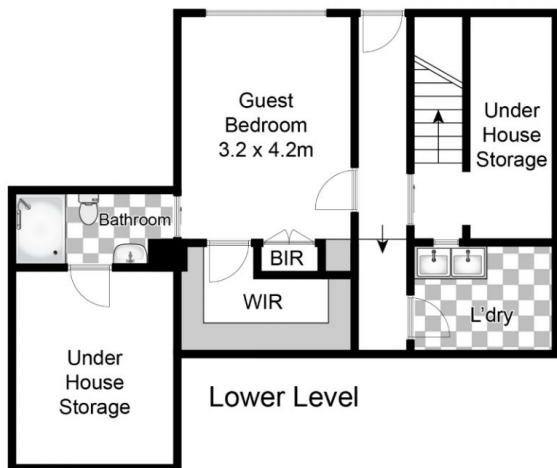


**Kristy Audsley**  
**9451 5224**

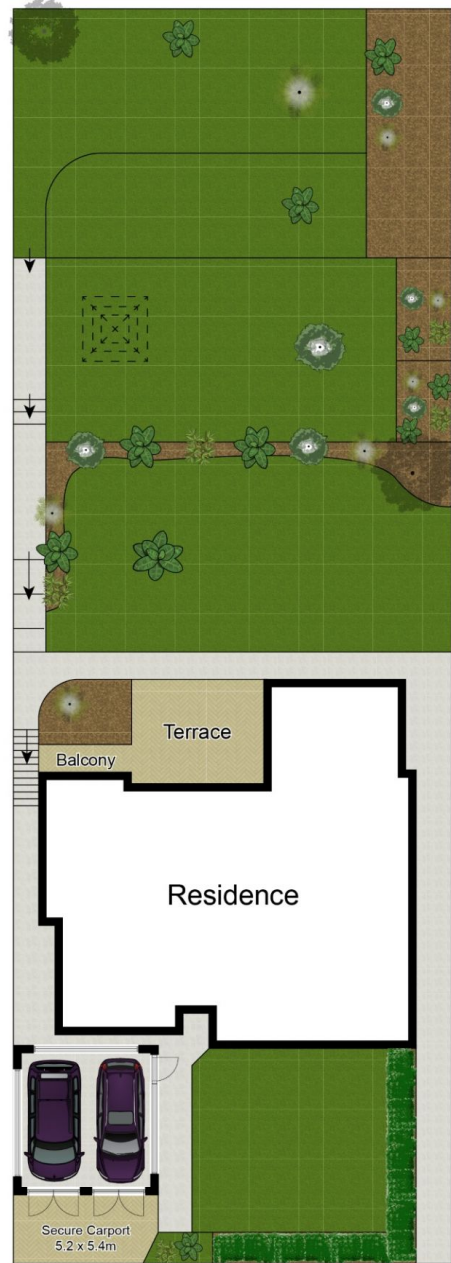
[For full version visit the website](https://www.jdhrealestate.com.au)



Entry Level



Lower Level



Site Plan

Approx House Area 200m<sup>2</sup>  
 Approx Land Area 689m<sup>2</sup>

Whilst [bwr.com.au](http://bwr.com.au) has made every attempt to ensure the accuracy of the floor plan contained here, measurements are approximate and no responsibility is taken for any error, omission, or mis-statement. This plan is for illustrative purposes only.



# 9 Goroka Place, Beacon Hill

