



40 Allworth Drive Davidson NSW

4 3 2

Opposite a children's playground, located at the end of a tightly held cul-de-sac, this impeccably presented home on 813sqm block offers a Northerly aspect and plenty of space for relaxed family living.

Features:

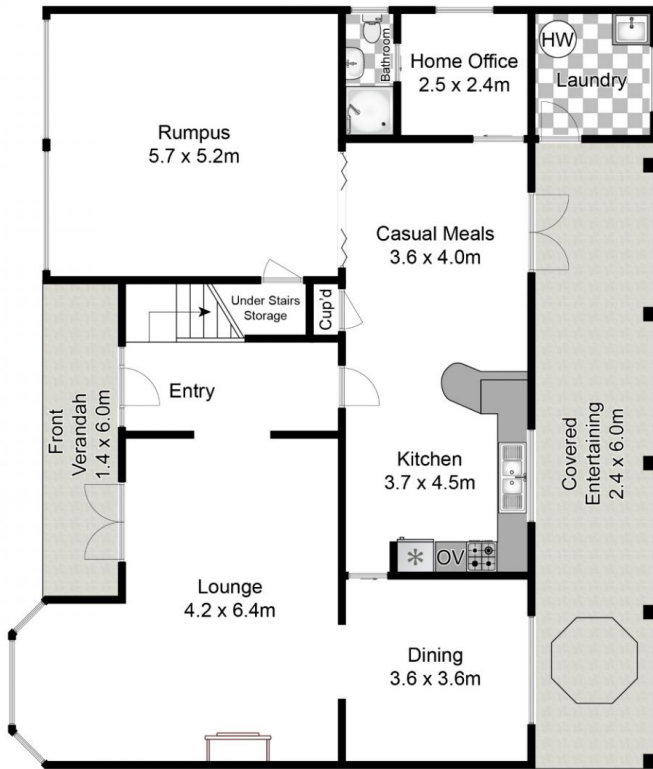
- _Versatile floorplan offering multiple living zones
- _Romantic main living with bay window, stone feature wall and gas fireplace
- _Spacious rumpus room with as new carpets, formal dining area
- _Gas kitchen with casual meals looking out to outdoor entertaining
- _Master bedroom features walk-in robe, ensuite and air conditioning

Type : House
Land Size : 813 sqm
View : <https://www.jdhrealestate.com.au/5923729>

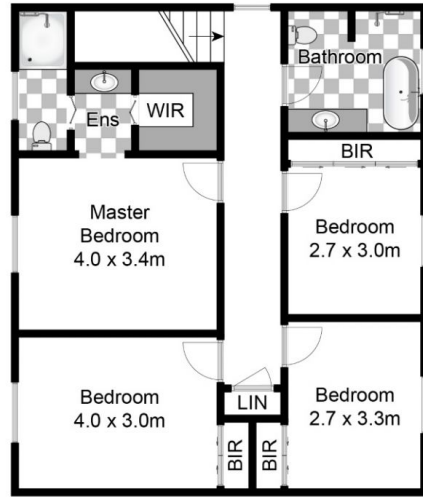


Darren Leach
9451 5224

[For full version visit the website](https://www.jdhrealestate.com.au)



Ground Level



Level One



Site Plan

Approx House Area 220m²
 Approx Land Area 813m²

Whilst bwr.com.au has made every attempt to ensure the accuracy of the floor plan contained here, measurements are approximate and no responsibility is taken for any error, omission, or mis-statement. This plan is for illustrative purposes only.

