



8 Jindabyne Street Frenchs Forest NSW

3 2 2

Positioned in a quiet street on a near level 696 sqm block with north west aspect, this single level home provides a great opportunity for downsizers or young families looking to grow into a home.

- * Master bedroom with ensuite
- * Air conditioning to main living area
- * Kitchen looks out to level backyard and undercover entertaining
- * Double carport with storage room
- * Short drive to local schools and the new Northern Beaches hospital
- * Close to CBD and Chatswood bus services
- * Both Glenrose shopping centre and Forest Way shopping centre only a short drive, offering Woolworths, Aldi, cafes

Type : House
Land Size : 696 sqm
View : <https://www.jdhrealestate.com.au/5923704>

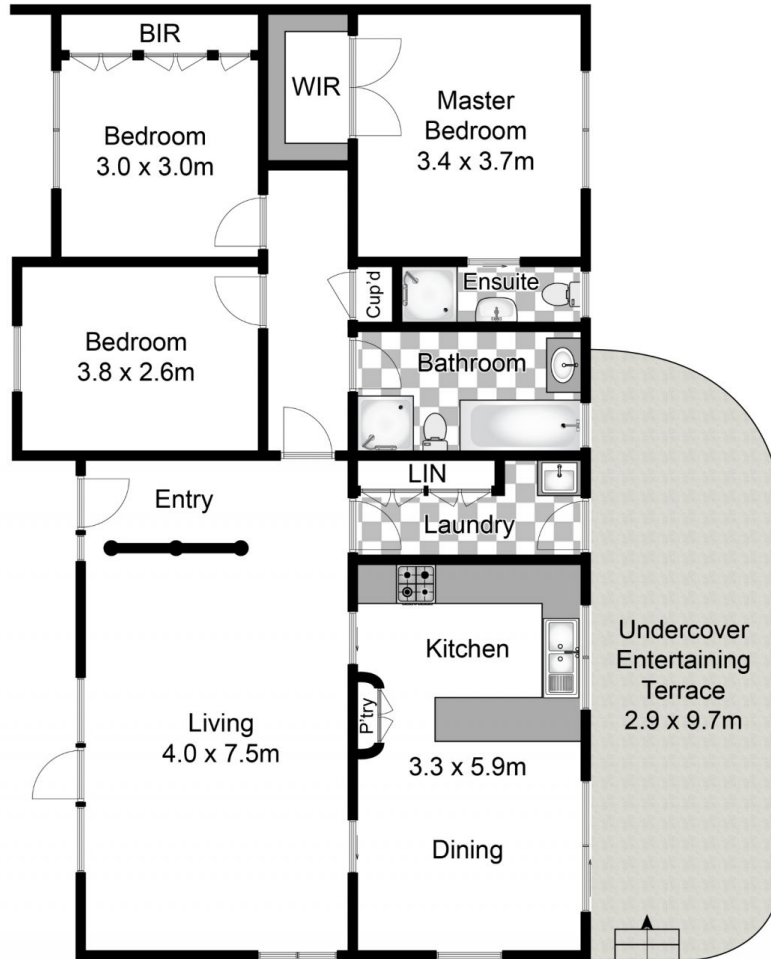


Darren Leach
9451 5224

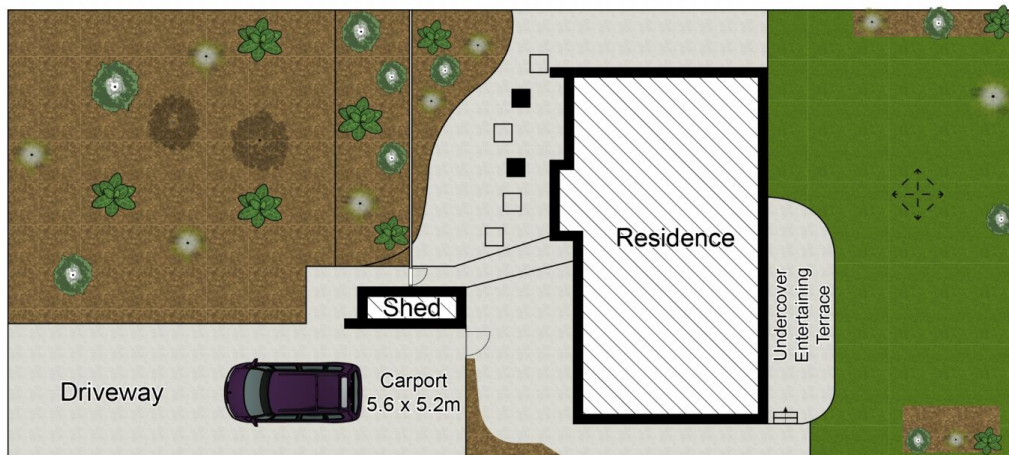
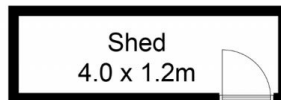


Lisa Kringas
9451 5224

[For full version visit the website](https://www.jdhrealestate.com.au)



Ground Floor



Site Plan

Approx House Area 115m²
 Approx Land Area 692m²

Whilst bwr.com.au has made every attempt to ensure the accuracy of the floor plan contained here, measurements are approximate and no responsibility is taken for any error, omission, or mis-statement. This plan is for illustrative purposes only.



8 Jindabyne Street, Frenchs Forest

